

PROSPECTUS 2022/23



BOTHO
UNIVERSITY
EXCELLENCE | LEADERSHIP | INNOVATION



BOS ISO 9001:2015 Certified Organisation
www.bothouniversity.com

OWN YOUR
FUTURE



BOTHO
UNIVERSITY
EXCELLENCE | LEADERSHIP | INNOVATION

Botho University Anthem

Chorus:

We will stand and wave our flag
As we shout our name in a chant of victory
It is a life changing experience
Do more with Botho University

We are the stars
Of Botho University
We will take
The world by storm

Chorus:

We will stand and wave our flag
As we shout our name a chant of victory
It is a life changing experience
Do more with Botho University

TABLE OF CONTENTS



About Us

4

Studying in Eswatini

5

BU Across Campuses

8

Our Programmes

9



Faculty of Health and Education

10

Faculty of Business & Accounting

12

Faculty of Engineering & Technology

17

FACULTIES



General Admissions Information

22

Employability and Our Graduates

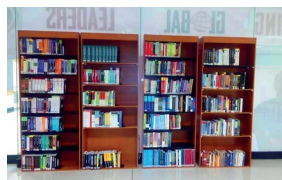
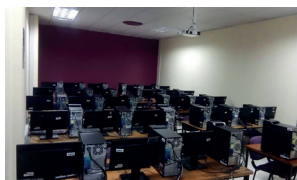
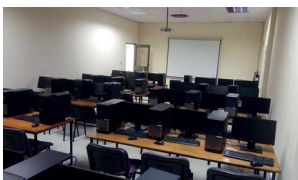
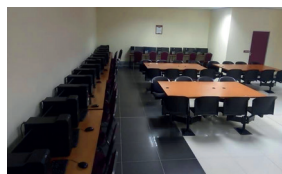
24

Quality & Accolades

26



ABOUT US



Botho University was established in 1997 and has rapidly evolved over the years to become a leading multidisciplinary high-quality tertiary education provider. Botho University was one of the first local tertiary institutions in Botswana to be accredited by the Human Resources Development Council (HRDC). All programmes offered by Botho University are approved by the Botswana Qualifications Authority (BQA), the Council on Higher Education (CHE) in Lesotho and the Namibia Qualifications Authority (NQA). Botho University currently offers programmes through four faculties namely Faculty of Business & Accounting, Faculty of Engineering and Technology, Faculty of Health and Education and Faculty of Hospitality and Sustainable Tourism. From January 2021, the Faculty of Computing and the Faculty of Engineering and Applied Sciences were merged to form a new Faculty of Engineering and Technology. The new Faculty will chart forward Botho University's strategy of building strong, industry-focused Science-Technology-Engineering-Mathematics (STEM) programmes, which are critical to the development of all our economies.

BU currently offers qualifications from certificate level to master's degree level with plans in place for doctoral programmes. With

over 3500 students and almost 350 staff members and growing, Botho University is a dynamic and exciting place to be. (refer to specific campus prospectus for details or visit www.bothouniversity.com for the latest updated information on programmes)

Botho University also offers a diverse range of programmes for in-service professionals and organizations. Under the Corporate Training Department, there are over 200 short-term professional development programmes, which can be customized to meet the client's requirements.

BU programmes are offered via fully online Distance Learning Campus and as well as our physical campuses located in Botswana (Gaborone), Lesotho (Maseru), Namibia (Ongwediva) and Eswatini (Manzini). Botho University is one of the only Southern African institutions to have established international campuses successfully operating outside Botswana producing well rounded, globally employable graduates.

OUR LEARNING MANAGEMENT SYSTEMS

As a modern university, Botho University is a technology driven institution. This is the

ABOUT US (CONTINUED)



strength which Botho University prides itself with from inception. The COVID 19 pandemic in 2020 had helped BU to demonstrate strength when the team migrated from classroom teaching and learning with ease, thanks to its already well established Blended & Distance Learning infrastructure. Faculty and students from various campuses were able to adapt easily when the University fully moved to “non-contact” teaching. This proved a higher interaction level in comparison to the classroom learning environment. During the COVID-19 pandemic, Botho University deployed high- end technology to ensure that learning and teaching continues in spite of the restrictions that posed a threat to many educational institutions dependent on teaching in physical campuses.

Botho University has invested in a robust state- of-the art Mobile Learning and e-Learning infrastructure called Blackboard that has been the backbone of its online distance learning programmes. All Botho University students and staff, including those in conventional learning, have been using Blackboard Learn and its Mobile application in a blended mode to enhance teaching and learning (combination of classroom and online learning).

Blackboard Learn is the Botho University Virtual Learning Environment (VLE). It is an online campus that supports teaching and learning, allowing students to access their course materials online. Blackboard App and Blackboard Instructor App are the mobile versions of Blackboard which students can access using their smart phones or tablets. Blackboard provides access to learning materials and activities online. It has a plethora of features and functionality that provides an unparalleled level of student engagement such as discussion forums, wikis, blogs and journals and advanced content management features

that allow for textual, audio, visual and pictorial content. In addition, Blackboard provides powerful assessment features that allow plagiarism checking as well as comprehensive reporting and analytics that allow for easy identification of “at-risk” students.

Apart from Blackboard, BU also has an industry leading anti-plagiarism check tool called “Turnitin” making its assessment activities stringent and of international quality.

Blackboard also allows easy and full access to e-Library facilities. With this, we confirm that all our students and Lecturers will be able to access the Both University E-Library, which leads to the following Databases; Emerald, Ebscohost, Proquest, Dawsonera, Jstor and BU Repository, for access of all the E-Books, E-Journals, theses, dissertations, case studies and many more resources.

CORPORATE TRAINING DEPARTMENT

Botho University has been involved in providing corporate training services since 1997. Our Corporate Training Department works with companies and individuals, helping them to develop crucial competencies and empowering employees at all levels to become more competitive. We develop professional development programmes designed to measurably improve productivity, performance, and profitability.



ABOUT US (CONTINUED)



The CTD curriculum and programme materials go through a stringent quality process. At the end of every training, participant's feedback is collected to evaluate and measure performance which help assist in our future service delivery.

Learning online with Botho university allows clients to take part in discussion on virtual classrooms guided by the lecturers. This collaborative approach enables students to demonstrate an understanding of the subject, while also learning and sharing knowledge with peers from all over.

FUTURE PLANS

Botho University's strategic focus is to increase student diversity by attracting international students. Apart from Botswana, Lesotho, Namibia and Eswatini, BU campuses (both physical and the Blended & Distance Learning Campus) attract several students across Africa. BU's vibrant community includes students from South Africa, Namibia, Zimbabwe, Zambia,

Democratic Republic of Congo and Ethiopia to name a few and the list is continuously growing as Botho expands its wings through its Distance Learning programmes.

BOTHO'S PARTNERSHIPS

Botho University also has several partnerships with well-known regional and international institutions such as University of Venda-RSA, KTH Royal Institute of Technology-Sweden, Black Hills State University-USA, University of Louisville-USA, Indian School of Mines-India, Manipal University in India and recently World Tourism Forum Lucerne-Switzerland. Students studying with Botho University have an immense opportunity to take advantage of these international partnerships through student exchange programmes. BU students have had internship programmes in India, USA, UK and Sweden amongst others, thus giving them incredible international exposure.

ABOUT US (CONTINUED)



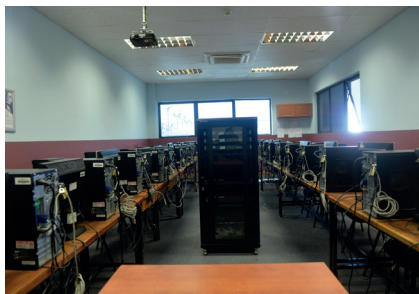
OUR QUALITY

Botho University is driven by the core values of integrity, excellence, and inclusiveness and aims to produce well-rounded, entrepreneurial, and globally employable graduates with the attitude, knowledge, skills, and competencies to create value and drive productivity increases needed to catalyse sustainable economic growth. The focus on quality has resulted in Botho University becoming the only university in Botswana with a BOS ISO 9001:2015 certification. With an impeccable reputation for quality in the market, Botho University graduates are leading the way in transforming the economy.

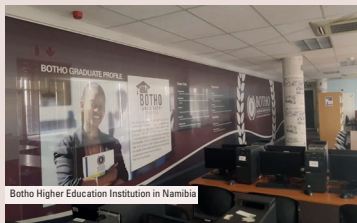
BLENDED AND DISTANCE LEARNING PROGRAMMES

The Blended and Distance Learning Campus, is driven by high levels of integrity, excellence and inclusiveness which are also the core values of the institution. These values are coupled with state of the art teaching infrastructure, qualified staff and accredited industry specific programmes offering the learner an employable, entrepreneurial and well rounded learning experience.

The University through distance learning offer many cross-disciplinary courses that are unique and designed to suit the upcoming market. With the advent of internet technology, it brings



BU ACROSS CAMPUSES



OUR PROGRAMMES



FACULTY OF HEALTH AND EDUCATION	
PROGRAMME CODE	PROGRAMMES
HIM - 8BO - 13	Bachelor of Science in Health Information Management
FACULTY OF BUSINESS & ACCOUNTING	
PROGRAMME CODE	PROGRAMMES
ACC - 8BO - 19	<u>Accounting Programmes</u> Bachelor of Science in Accounting
BMA - 8BO - 19	<u>Business Programmes</u> Bachelor of Science in Business Management
ACA - 8PL - 17 CMA - 8AD - 11	<u>Professional Accounting Programmes</u> ACCA - Association of Chartered Certified Accountants CIMA - Chartered Institute Of Management Accountants (Member of The Chartered Institute of Management)
FACULTY OF COMPUTING	
PROGRAMME CODE	PROGRAMMES
COM - 8BH - 11	Bachelor of Science in Computing
MCO - 8BO - 13	Bachelor of Science in Mobile Computing
NFC - 8BH - 13	Bachelor of Science in Network Security and Computer Forensics

*Please contact the Admissions Department to find out which programmes are available in your choice campus of study.

*Check our website for the latest updates on Campus Learning programmes and Distance Learning programmes by visiting www.bothouniversity.com

FACULTY OF HEALTH AND EDUCATION

Bachelors of Science in Health Information Management

Programme details:

The programme consists of core (required) and elective modules as follows. Some modules may have pre-requisites (i.e. may require the student to pass another module or set of modules first). Some modules may be co-requisite (i.e. such modules are required to be taken together). The number at the end of the module in parenthesis indicates the credit load of the module. 1 credit is equal to 10 hours of learning (guided, in-class and independent combined); therefore a 10-credit module requires on average 100 hours of learning from the student.

Core modules:

- C5 - ICO - 11 Introduction to Computing (20)
- B5 - BM1 - 13 Business Management 1 (20)
- D5 - CS1 - 13 Communication Study Skills 1 (20)
- D5 - HB1 - 13 Human Biology 1 (Anatomy and Physiology) (20)
- D5 - MDB - 13 Medical Databases (20)
- D5 - CS2 - 13 Communication Study Skills 2 (20)
- A5 - IFA - 13 Introduction to Financial Accounting (20)
- D6 - HB2 - 13 Human Biology 2 (Pharmacology and Pathology) (20)
- D6 - CHA - 13 Computing in Health Administration (20)
- D6 - HET - 13 Health Ethics (20)
- D6 - EPI - 13 Epidemiology (20)
- B6 - MKT - 13 Marketing Management (20)
- D7 - HI1 - 13 Health Information 1 (20)
- D7 - MT1 - 13 Medical Terminology 1 (20)
- D7 - DCO - 13 Disease Coding (20)
- D7 - MST - 13 Medical Statistics (20)
- D7 - PPR - 13 Professional Practice (60)
- D8 - PHI - 13 Public Health Information Management (20)
- D8 - MT2 - 13 Medical Terminology 2 (20)
- B8 - ENT - 13 Essentials of Entrepreneurship (20)
- D8 - PRO - 13 Project (40)

Elective modules:

Select one from the following:

- B7 - OPM - 13 Operations Management (20)

- D7 - MTR - 13 Medical Transcription (20)

Select one from the following:

- D7 - HI2 - 13 Health Information 2 (20)
- B7 - PRM - 13 Project Management (20)

Select one from the following:

- D8 - FHI - 13 Fundamentals of Health Insurance (20)
- B8 - HRM - 13 Human Resources Management (20)

Recommended full-time study path

(4½ years):

Semester 1:

- C5 - ICO - 11, B5 - BM1 - 13, D5 - CS1 - 13

Semester 2:

- D5 - HB1 - 13, D5 - MDB - 13, D5 - CS2 - 13

Semester 3:

- A5 - IFA - 13, D6 - HB2 - 13, D6 - CHA - 13

Semester 4:

- D6 - HET - 13, D6 - EPI - 13, B6 - MKT - 13

Semester 5:

- D7 - HI1 - 13, D7 - MT1 - 13, elective (one of B7 - OPM - 13, B7 - MTR - 13)

Semester 6:

- D7 - DCO - 13, D7 - MST - 13, elective (one of D7 - HI2 - 13, B7 - PRM - 13)

Semester 7:

- D7 - PPR - 13

Semester 8:

- D8 - PHI - 13, D8 - MT2 - 13, elective (one of D8 - FHI - 13, B8 - HRM - 13)

Semester 9:

- B8 - ENT - 13, D8 - PRO - 13

Admissions Criteria

1) Application are expected to have successfully completed secondary schooling. The typical entry requirement for any Diploma or Bachelors programme is SGCSE, IGCSE, or other equivalent secondary school qualification. SGCSE and IGCSE candidates are required to achieve a minimum grade of 'C' or above in 5 subjects."

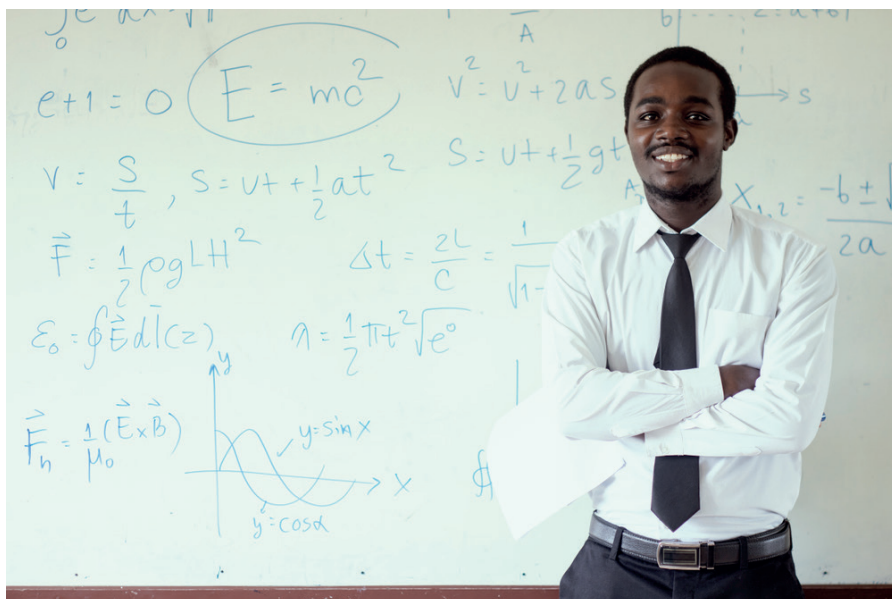
FACULTY OF HEALTH AND EDUCATION (CONTINUED)



2) Applicants must have 10 points in English and Mathematics combined or 32 points in the top 5 subjects.

3) Applicants must have a credit in Biology or Human and Social Biology or Life Sciences.

4) Applicants in possession of a Diploma or Higher Diploma in related field may be given exemptions based on the credit point equivalency.



FACULTY OF BUSINESS & ACCOUNTING

Bachelors of Science in Accounting

Programme details:

The programme consists of core (required) and elective modules as follows. Some modules may have pre-requisites (i.e. may require the student to pass another module or set of modules first). Some modules may be co-requisite (i.e. such modules are required to be taken together). The number at the end of the module in parenthesis indicates the credit load of the module. 1 credit is equal to 10 hours of learning (guided, in-class and independent combined); therefore a 10-credit module requires on average 100 hours of learning from the student.

Core modules:

- C5 - ICO - 11: Introduction to Computers (20)
- A5 - FBF - 13: Fundamentals of Business and Finance (20)
- D5 - CS1 - 17: Communication and Study Skills 1 (10)
- A5 - IFA - 13: Introduction to Financial Accounting (20)
- B5 - LAB - 13: Legal Aspects of Business (20)
- D5 - CS2 - 17: Communication & Study Skills 2 (10)
- A6 - PEA - 13: Principles of Ethics and Assurance (20)
- A7 - MAC - 17: Management Accounting (20)
- B5 - BS1 - 17: Business Mathematics & Statistics 1 (10)
- A6 - FA1 - 17: Financial Accounting (10)
- A6 - POT - 13: Principles of Taxation (20)
- A7 - TAX - 17: Taxation (20)
- A7 - AAS - 17: Audit and Assurance (20)
- A7 - FR1 - 17: Financial Reporting 1 (20)
- A6 - COA - 17: Cost Accounting (20)
- A7 - FR2 - 17: Financial Reporting 2 (10)
- A7 - PRA - 17: Professional Practice in Accounting (60)
- B8 - ENT - 13: Essentials of Entrepreneurship (20)
- A8 - PRO - 13: Project (40)
- B6 - MIE - 17: Microeconomics (10)

- A6 - FA2 - 17: Financial Accounting 2 (10)
- B7 - CGV - 13: Corporate Governance
- B5 - BS2 - 17: Business Mathematics & Statistics 2 (10)
- B6 - MAE - 17: Macroeconomics (10)
- A7 - CFI - 13: Corporate Finance (20)
- A8 - AFR - 17: Advanced Financial Reporting (20)
- A6 - CDA - 17: Computerised Accounting (20)

Elective Modules

Select one from the following:

- A7 - PSF - 17: Public Sector Financial Reporting (10)
- A7 - COL - 17: Company Law (10)

Select one from the following:

- A8 - ADT - 17: Advanced Taxation (10)
- B8 - STM - 17: Strategic Management (10)
- A8 - AAA - 17: Advanced Audit and Assurance (10)

Recommended full-time study path (4½ years):

Semester 1:

C5 - ICO - 11, A5 - FBF - 13, D5 - CS1 - 17, B5 - BS1 - 17

Semester 2:

A5 - IFA - 13, B5 - LAB - 13, D5 - CS2 - 17, B5 - BS2 - 17

Semester 3:

A6 - PEA - 13, A6 - FA1 - 17, B6 - MIE - 17, A6 - CDA - 17

Semester 4:

A6 - FA2 - 17, A6 - POT - 13, B6 - MAE - 17, A6 - COA - 17

Semester 5:

A7 - TAX - 17, A7 - MAC - 17, A7 - FRI - 17

Semester 6:

A7 - CFI - 13, A7 - AAS - 17, A7 - FR2 - 17
Elective (one of A7 - PSF - 17, A7 - COL - 17)

Semester 7:

A7 - PPA - 17

Semester 8:

A8 - AFR - 17, B7 - CGV - 13 Elective (two of

FACULTY OF BUSINESS & ACCOUNTING (CONTINUED)



A8 - ADT - 17, A8 - AAA - 17, B8 - STM - 17)

Semester 9:

B8 - ENT - 13, A8 - PRO - 13

Admissions Criteria

1) Applicants are expected to have successfully completed secondary schooling. The typical entry requirement is BGCSE or IGCSE (in Botswana), LGCSE (in Lesotho) or other equivalent secondary school qualification.

2) Candidates are required to achieve a minimum pass in five subjects and 10 points in English and Mathematics, with a minimum of a C in Mathematics or 32 points and above in the best 5 subjects with a minimum of a C in Mathematics

3) Applicants in possession of a Diploma or Higher Diploma in related field may be given exemptions based on the credit point equivalency

4) For enquiries and more information please visit our website: www.bothouniversity.com

Bachelors of Science in Business Management

Programme details:

The programme consists of core (required) and elective modules as follows. Some modules may have pre-requisites (i.e. may require the student to pass another module or set of modules first). Some modules may be co-requisite (i.e. such modules are required to be taken together). The number at the end of the module in parenthesis indicates the credit

load of the module. 1 credit is equal to 10 hours of learning (guided, in-class and independent combined); therefore a 10-credit module requires on average 100 hours of learning from the student.

Core Modules

- C5 - ICO - 13: Introduction to Computers (20)
- B5 - BM1 - 13: Business Management 1 (20)
- D5 - CS1 - 17: Communication & Study Skills 1 (10)
- B5 - BM2 - 13: Business Management 2 (20)
- B5 - LAB - 13: Legal Aspects of Business (20)
- D5 - CS2 - 17: Communication & Study Skills 2 (10)
- B6 - MAE - 17: Macroeconomics (10)
- B6 - OBE - 13: Organisational Behaviour (20)
- A5 - IFA - 13: Introduction to Financial Accounting (20)
- B5 - BS1 - 17: Business Mathematics & Statistics 1 (10)
- B5 - BS2 - 17: Business Mathematics & Statistics 2 (10)
- B5 - MIE - 17: Microeconomics (10)
- B6 - MKT - 13: Marketing Management (20)
- A6 - COA - 17: Cost Accounting (20)
- B6 - SBM - 17: Small Business Management (20)
- B7 - OPM - 13: Operations Management (20)
- B7 - CFI - 13: Corporate Finance (20)
- B7 - EBS - 13: E-Business (20)
- B7 - PPB - 13: Professional Practice in Business (60)
- B8 - BRM - 13: Business Research Methods (20)
- B8 - STM - 13: Strategic Management (20)
- B8 - ENT - 13: Essentials of Entrepreneurship (20)
- B8 - PRO - 13: Project (40)
- B7 - FFM - 17: Fundamentals of Financial Management (20)

Elective Modules:

Select one from the following:

- B7 - CGV - 13: Corporate Governance (20)
- B7 - SMK - 13: Strategic Marketing (20)
- B7 - PRM - 13: Project Management (20)

FACULTY OF BUSINESS & ACCOUNTING (CONTINUED)

- B7 - CHM - 13: Change Management (20)
- B8 - HRM - 13: Human Resources Management (20)
- B8 - IEM - 13: Import and Export Management (20)

Recommended full-time study path (4½ years):

Semester 1:

- B5 - BM1 - 13, D5 - CS1 - 17, C5 - ICO - 13, B5 - BS1 - 17

Semester 2:

- B5 - BM2 - 17, B5 - LAB - 13, B5 - BS2 - 17, B5 - MIE - 17

Semester 3:

- B6 - MAE - 17, B6 - OBE - 13, A5 - IFA - 13, D5 - CS2 - 17

Semester 4:

- A6 - COA - 17, B6 - MKT - 13, B6 - SBM - 17

Semester 5:

- B7 - OPM - 13, B7 - FFM - 17 Elective one from B7 - CGV - 13, B7 - SMK - 13

Semester 6:

- B7 - CFI - 13, B7 - EBS - 13, and one elective from B7 - PRM - 13, B7 - CHM - 13

Semester 7:

- B7 - PPB - 13

Semester 8:

- B8 - BRM - 13, B8 - STM - 13, and one elective from B8 - HRM - 13, B8 - IEM - 13

Semester 9:

- B8 - ENT - 13, B8 - PRO - 13

Admissions Criteria

- 1) Application are expected to have successfully completed secondary schooling. The typical entry

requirement for any Diploma or Bachelors programme is SGCSE, IGCSE, or other equivalent secondary school qualification. SGCSE and IGCSE candidates are required to achieve a minimum grade of 'C' or above in 5 subjects."

- 2) Applicants must have 10 points in English and Mathematics combined or 32 points in the top 5 subjects.

- 3) Applicants must have a minimum of Grade C in Mathematics and English.

- 4) Applicants in possession of a Diploma or Higher Diploma in related field may be given exemptions based on the credit point equivalency. A.



FACULTY OF BUSINESS & ACCOUNTING (CONTINUED)



ACCA - Association of Chartered Certified Accountants

Programme details:

ACCA is a great choice for professional development. It can offer you excellent job prospects. Because accountants play a central function in any business, accountancy offers you prestige and responsibility. Apart from successfully passing the papers, you will also need to complete three years relevant experience. A complete ACCA is equivalent to a master's degree.

Learning, Teaching & Assessment

Guided Learning: The students will be exposed to lectures, tutorials and supervised study by the teachers.

Lectures: The teacher will present materials either orally or by the use of other teaching aids.

Online Learning: The lecture notes, online tests, additional study material, discussion group and links to related subjects will be made available to students.

Independent Learning: The students will have to undertake self-directed independent learning where the teacher acts as a guide.

Assessment: This will be of various types. It could be written or objective type (multiple choice) or a combination of both. For details refer to ACCA website www.accaglobal.com

Year 1: Semester 1 & 2

Semester 1

- AB - Accountant in Business
- MA - Management Accounting
- FA - Financial Accounting

(If a student exits after successful completion of semester 1 then the student is eligible for a **ACCA - Diploma in Accounting and Business** qualification)

Semester 2

- LW - Corporate and Business Law
- TX - Taxation

Year 2: Semester 3 & 4

Semester 3

- FR - Financial Reporting
- AA - Audit and Assurance

Semester 4

- FM - Financial Management
- PM - Performance Management
- EPS - Ethics and Professional Skills

(If a student exits after successful completion of semester 4 then the student is eligible for a **ACCA - Advanced Diploma in Accounting and Business** qualification)

Semester 5

- SBR - Strategic Business Reporting
- SBL - Strategic Business Leader

Semester 6 (any two papers)

- AFM - Advanced Financial Management
- APM - Advanced Performance Management
- AAA - Advanced Audit and Assurance
- ATX - Advanced Taxation

*** The sequence of the papers being taught may be changed with the explicit permission of the Dean.**

****To be done if the student did not complete or was exempted from A6 - FIP in semester 1.**

The above information is true at the time of publishing.

For latest updates and for more details refer to the ACCA official website: www.accaglobal.com

Admissions Criteria



Applicant should have passed 'A' level or an equivalent qualification as required by ACCA <http://www.accaglobal.com/in/en/qualifications/glance/acca/minimum-entrance-requirements.html>

FACULTY OF BUSINESS & ACCOUNTING (CONTINUED)

CIMA - Chartered Institute Of Management Accountants (Member of The Chartered Institute of Management)

Learning, Teaching & Assessment

Guided Learning: The students will be exposed to lectures, tutorials and supervised study guided by the teachers.

Lectures: The teacher will present materials either orally or by the use of other teaching aids.

Online Learning: The lecture notes, on-line tests, additional study material, discussion groups and links to related subjects, amongst other things, will be made available to students.

Independent Learning: The students will have to do self-directed independent learning where the teacher will be acting as a guide.

Assessment: This will be of various types. It could be written or online objective type (multiple choices) or a combination of both. For details refer to CIMA website www.cimaglobal.com

Core Modules:

B2: Fundamentals of Management Accounting
B3: Fundamentals of Financial Accounting
B1: Fundamentals of Business Economics
B4: Fundamentals of Ethics, Corporate Governance and Business Law
E1: Organisational Management
P1: Management Accounting
F1: Financial Reporting & Taxation
OCS: Operational Case Study
E2: Project & Relationship Management
P2: Management Accounting
F2: Advanced Financial Reporting
MSC: Management Case Study
E3: Strategic Management
P3: Risk Management
F3: Financial Strategy
SCS: Strategic Case Study

Semester 1

B2, B3

Semester 2

B1, B4

Semester 3

E1, P1

Semester 4

F1, OCS

Semester 5

E2, P2

Semester 6

F2, MCS

Semester 7

E3, P3

Semester 8

F3, SCS

Typical Study Schedule (credits shown in brackets)

***The sequence of the papers being taught may be changed with the explicit permission of the Dean.**

The above information is true at the time of publishing. For latest updates and for more details on practical work experience etc. please refer to the CIMA official website: www.cimaglobal.com

Admissions Criteria

1) Application are expected to have successfully completed secondary schooling. The typical entry requirement for any Diploma or Bachelors programme is SGCSE, IGCSE, or other equivalent secondary school qualification. SGCSE and IGCSE candidates are required to achieve a minimum grade of 'C' or above in 5 subjects."

2) Applicants must have 10 points in English and Mathematics combined or 32 points in the top 5 subjects.

3) For more detailed information on admission criteria and exemptions please refer to the CIMA website www.cimaglobal.com

4) For enquiries and more information please visit our website: www.bothouniversity.com

Bachelors of Science in Computing

Programme details:

The programme consists of core (required) and elective modules as follow. Some modules may have pre-requisites (i.e. may require the student to pass another module or set of modules first). The number at the end of the module in parenthesis indicates the credit load of the module. 1 credit is equal to 10 hours of learning (guided, in-class and independent combined); therefore a 10-credit module requires on average 100 hours of learning from the student. B.Sc. (Hons) in Computing has three specialisation areas including: Software Engineering (SE), Network & Infrastructure Management (NW&IM) and General.

Core modules:

- C5 - ICO - 11: Introduction to Computers (20)
- C5 - MAT - 11: Mathematics – 1 (20)
- D5 - CSS - 14: Communication and Study Skills (20)
- C5 - CSA - 11: Computer System Architecture (20)
- C5 - OSH - 11: Operating Systems & Hardware (20)
- C6 - DMA - 19: Discrete Mathematics (20)
- C6 - QMD - 11: Querying and Managing Databases (40)
- C6 - IPC - 11: Introduction to Programming using C++ (20)
- C6 - DMO - 11: Database Management using Oracle (20)
- C6 - MD1 - 11: Managing Business Desktops 1 (20)
- C6 - WCD - 11: Web Content Development (20)
- C7 - JAV - 11: Programming using Java (20)
- C7 - MD2 - 11: Managing Business Desktops 2 (20)
- C7 - ITP - 11: IT Project Management (20)
- C7 - DSA - 11: Data Structures and Algorithms (20)
- C7 - ADJ - 11: Advanced Java (20)
- C7 - NH1 - 11: Managing Network Hardware 1 (20)
- C7 - WN1 - 11: Windows Network Administration 1 (20)
- C7-PPR-11: Professional Practice (60)
- C8 - IDE - 11: Interaction Design (20)
- C8 - LNA - 11: Linux Network Administration (20)

- C8 - NH2 - 11: Managing Network Hardware 2 (20)
- C8 - WN2 - 11: Windows Network Administration 2 (20)

Elective modules:

Select one from the following:

- E8 - ISD - 18 : Innovation for sustainable development (20)
- B8 - ENT - 11: Essentials of Entrepreneurship (20)

Select any two from the following:

- C7 - SEN - 11: Software Engineering (20)
- C7 - PN1 - 11: Programming using .Net 1 (20)
- C7 - CP1 - 11: Designing Creative Publications 1 (20)

Select one from the following:

- C8 - MAD - 11: Mobile Application Development (20) or
- C8 - 3DD - 11: 3D Design (20)

Select one from the following:

- C8 - CP2 - 11: Designing Creative Publications 2 (20) or
- C8 - PN2 - 11: Programming using .Net 2 (20)

Recommended full-time study path for Software Engineering specialisation (4½ years):

Semester 1:

- C5 - ICO - 11, C5 - MAT - 11, D5 - CS5 - 14

Semester 2:

- C5 - CSA - 11, C5 - OSH - 11, C6 - DMA - 19

Semester 3:

- C6 - QMD - 11, C6 - IPC - 11

Semester 4:

- C6 - DMO - 11, C6 - MD1 - 11, C6 - WCD - 11

Semester 5:

- C7 - JAV - 11, Electives any two (C7 - SEN - 11, C7 - PN1 / C7 - CP1)

Semester 6:

- C7 - ITP - 11, C7 - DSA - 11, C7 - ADJ - 11

Semester 7:

- C7 - PPR - 11

Semester 8:

- C8 - IDE - 11, First Elective select any one (C8 - MAD - 11/C8 - 3DD - 11), Second

FACULTY OF ENGINEERING AND TECHNOLOGY (CONTINUED)

Elective select any one (C8 - CP2 - 11/C8 - PN2 - 11)

Semester 9:

C8 - PRO - 11, Elective select anyone (B8 - ENT - 11, E8 - ISD -18)

Recommended full-time study path for Network & Infrastructure Management specialisation (4½ years):

Semester 1:

- C5 - ICO - 11, C5 - MAT - 11, D5 - CS5 - 14

Semester 2:

- C5 - CSA - 11, C5 - OSH - 11, C6 - DMA - 19

Semester 3:

- C6 - QMD - 11, C6 - IPC - 11

Semester 4:

- C6 - DMO - 11, C6 - MD1 - 11, C6 - WCD - 11

Semester 5:

- C7 - JAV - 11, C7 - PIS - 11, C7 - MD2 - 11

Semester 6:

- C7 - ITP - 11, C7 - NH1 - 11, C7 - WN1 - 11

Semester 7:

- C7 - PPR - 11

Semester 8:

- C8 - LNA - 11, C8 - NH2 - 11, C8 - WN2 - 11

Semester 9:

C8 - PRO - 11, Elective select anyone (B8 - ENT - 11, E8 - ISD -18)

Recommended full-time study path for General specialisation (4½ years):

Semester 1:

- C5 - ICO - 11, C5 - MAT - 11, D5 - CS5 - 14

Semester 2:

- C5 - CSA - 11, C5 - OSH - 11, C6 - DMA - 19

Semester 3:

- C6 - QMD - 11, C6 - IPC - 11

Semester 4:

- C6 - DMO - 11, C6 - MD1 - 11, C6 - WCD - 11

Semester 5:

- C7 - JAV - 11, Select one from Software (C7 - SEN - 11/C7 - PN1/C7 - CP1) and Select one from NW & IM (C7 - PIS - 11/C7 - MD2 - 11)

Semester 6:

- C7 - ITP - 11 Select one from Software (C7 - DSA - 11/C7 - ADJ - 11) and Select one from NW & IM (C7 - NH1 - 11/C7 - WN1 - 11)

Semester 7:

- C7 - PPR - 11

Semester 8:

- C8 - IDE - 11, Select one from Software (C8 - MAD - 11/C8 - 3DD - 11/ C8 - CP2 - 11/C8 - PN2 - 11) and Select one from NW & IM (C8 - LNA - 11/C8 - NH2 - 11/C8 - WN2 - 11)

Semester 9:

C8 - PRO - 11, Elective select anyone (B8 - ENT - 11, E8 - ISD -18)

Admissions Criteria

1) Application are expected to have successfully completed secondary schooling. The typical entry requirement for any Diploma or Bachelors programme is SGCSE, IGCSE, or other equivalent secondary school qualification. SGCSE and IGCSE candidates are required to achieve a minimum grade of 'C' or above in 5 subjects."

2) Applicants must have 10 points in English and Mathematics combined or 32 points in the top 5 subjects.

3) Applicants in possession of a Diploma or Higher Diploma in related field may be given exemptions based on the credit point equivalency.

For enquiries and more information please visit our website: www.bothouniversity.com



Bachelors of Science in Mobile Computing

Programme details:

The programme consists of core (required) and elective modules as follows. Some modules may have pre-requisites (i.e. may require the student to pass another module or set of modules first). Some modules may be co-requisite (i.e. such modules are required to be taken together). The number at the end of the module in parenthesis indicates the credit load of the module. 1 credit is equal to 10 hours of learning (guided, in-class and independent combined); therefore a 10-credit module requires on average 100 hours of learning from the student.

Core modules:

- C5 - ICO - 11: Introduction to Computers (20)
- C5 - MAT - 11: Mathematics - 1 (20)
- D5 - CS5 - 14: Communication Study Skills (20)
- C5 - CSA - 11: Computer Systems Architecture (20)
- C5 - OSH - 11: Operating Systems and Hardware (20)
- C6 - DMA - 19: Discrete Mathematics (20)
- C6 - QMD - 11: Querying and Managing Databases (40)
- C6 - IPC - 11: Introduction to Programming using C++ (20)
- C6 - MDC - 13: Mobile Communications (20)
- C6 - MD1 - 11: Managing Business Desktops 1 (20)
- C6 - WCD - 11: Web Content Development (20)
- C7 - JAV - 11: Programming Using Java (20)
- C7 - MTE - 13: Mobile Technologies (20)
- C7 - MOS - 13: Mobile Operating Systems (20)
- C7 - DCO - 13: Data Communications (20)
- C7 - WNM - 13: Wireless Networks and Mobile System Architecture (20)
- C7 - MDP - 13: Mobile Device Programming (20)
- C7 - PPR - 11: Professional Practice (60)
- C8 - MID - 13: Mobile Interaction Design (20)
- C8 - PRO - 11: Project (40)

Elective modules:

Select Two from the following:

- C8 - MIA - 13: Mobile Internet Applications and Services (20)
- C8 - DIS - 13: Distributed Systems (20)

- C8 - WNS - 13: Wireless Network Security (20)
- C8 - MEC - 13: Mobile Electronic Commerce (20)
- E8 - ISD - 18: Innovation for sustainable development (20)
- B8 - ENT - 13: Essentials of Entrepreneurship (20)

Recommended full-time study path (4½ years):

Semester 1:

- C5 - ICO - 11, C5 - MAT - 11, D5 - CS5 - 14

Semester 2:

- C5 - CSA - 11, C5 - OSH - 11, C6 - DMA - 19

Semester 3:

- C6 - QMD - 11, C6 - IPC - 11

Semester 4:

- C6 - MDC - 13, C6 - MD1 - 11, C6 - WCD - 11

Semester 5:

- C7 - JAV - 11, C7 - MTE - 13, C7 - MOS - 13

Semester 6:

- C7 - WNM - 13, C7 - MDP - 13, C7 - DCO - 13

Semester 7:

- C7 - PPR - 11

Semester 8:

- C8 - MID - 13, elective (Two of C8 - DIS - 13, C8 - WNS - 13, C8 - MIA - 13, C8 - MEC - 13)

Semester 9:

- C8 - PRO - 11, Elective select one (B8 - ENT - 13, E8 - ISD - 18)

Admissions Criteria

1) Application are expected to have successfully completed secondary schooling. The typical entry requirement for any Diploma or Bachelors programme is SGCSE, IGCSE, or other equivalent secondary school qualification. SGCSE and IGCSE candidates are required to achieve a minimum grade of 'C' or above in 5 subjects."

2) Applicants must have 10 points in English and Mathematics combined or 32 points in the top 5 subjects.

3) Applicants in possession of a Diploma or Higher Diploma in related field may be given exemptions based on the credit point equivalency.

For enquiries and more information please visit our website: www.bothouniversity.com

FACULTY OF ENGINEERING AND TECHNOLOGY (CONTINUED)

Bachelors of Science in Network Security and Computer Forensics

The Bachelor of Science in Network Security and Computer Forensics is targeted at those wishing to enter the Information Technology (IT) sector as Computer Forensic Analysts, Vulnerability Security Research Engineers, Digital Forensic Examiners, Malware Media Forensic Analysts, Forensic Auditors, Network Security Specialists, Computer Crime Investigators or Security Analysts, among other things.

Programme details:

The programme consists of core (required) and elective modules as detailed below. Some modules may have pre-requisites (i.e. may require the student to pass another module or set of modules first). Some modules may be co-requisite (i.e. such modules are required to be taken together). The number at the end of the module in parenthesis indicates the credit load of the module. 1 credit is equal to 10 hours of learning (guided, in-class and independent combined); therefore a 10-credit module requires on average 100 hours of learning from the student.

Core modules:

- C5 - ICO - 11: Introduction to Computers (20)
- C5 - MAT - 11: Mathematics 1 (20)
- D5 - CSS - 14: Communication & Study Skills (20)
- C5 - CSA - 11: Computer Systems Architecture (20)
- C5 - OSH - 11: Operating Systems & Hardware (20)
- C6 - IPC - 11: Introduction to programming using C++ (20)
- C6 - QMD - 11: Querying & Managing Database (40)
- C6 - FNS - 13: Fundamentals of Network Security (20)

- C6 - MD1 - 11: Managing Business Desktops 1 (20)
- C6 - IDS - 13: Information and Data Security (20)
- C6 - CFD - 13: Computer Forensics and Data Recovery (20)
- C7 - JAV - 11: Programming using Java (20)
- C7 - PIS - 11: Protocols and Internetworking standards (20)
- C7 - BIF - 13: Biometric Fundamentals (20)
- C7 - NH1 - 11: Managing Network Hardware 1 (20)
- C7 - EHK - 13: Ethical Hacking (20)
- C7 - CYL - 17: Cyber Law (20)
- C7 - PPR - 11: Professional Practice (60)
- C8 - NH2 - 11: Managing Network Hardware 2 (20)
- C8 - MAN - 13: Malware Analysis (20)
- C8 - PRO - 11: Project (40)

Elective modules:

Select One from the following:

- C8 - CCI - 13 Cyber Crime Investigation (20) or C8 - WNA - 11 Windows Network Administration (20)
- B8 - ENT - 13 Essentials of Entrepreneurship (20)
- E8 - ISD - 18 Innovation for Sustainable Development (20)

Semester 1:

- C5 - ICO - 11, C5 - MAT - 11, D5 - CSS - 14

Semester 2:

- C5 - CSA - 11, C5 - OSH - 11, C6 - IPC - 11

Semester 3:

- C6 - QMD - 11, C6 - FNS - 13

Semester 4:

- C6 - MD1 - 11, C6 - IDS - 13, C6 - CFD - 13

Semester 5:

- C7 - JAV - 11, C7 - PIS - 11, C7 - BIF - 13

Semester 6:

- C7 - NH1 - 11, C7 - EHK - 13, C7 - CYL - 13

Semester 7:

FACULTY OF ENGINEERING AND TECHNOLOGY (CONTINUED)



- C7 - PPR - 11,

Semester 8:

- C8 - NH2 - 11, C8 - MAN - 13
- Elective (one of C8 - WNA - 13, C8 - CCI - 13)

Semester 9:

- C8 - PRO - 11, Elective select anyone (E8 - ISD - 18, B8 - ENT - 11)

Admissions Criteria

1) Application are expected to have successfully completed secondary schooling. The typical entry requirement for any Diploma or Bachelors programme is SGCSE, IGCSE, or other equivalent secondary school qualification. SGCSE and IGCSE candidates are required to achieve a minimum grade of 'C' or above in 5 subjects."

2) Applicants must have 10 points in English and Mathematics combined or 32 points in the top 5 subjects.

3) Applicants in possession of a Diploma or Higher Diploma in related field may be given exemptions based on the credit point equivalency

4) For enquiries and more information please visit our website: www.bothouniversity.com



GENERAL ADMISSIONS INFORMATION



GENERAL CRITERIA

1. Applying to Botho University

Before applying to Botho University, students are encouraged to take time out to familiarise themselves with all the programmes on offer. Applicants must meet all the relevant minimum requirements for the programme of study they wish to study. It is also important for applicants to assess whether the programme they choose interests them and that they want to make a career out of it. Our friendly Admission Team Counsellors will provide information needed about the programmes and assist applicants to make informed choices. Details on programmes are available on our website: www.bothouniversity.com

2. How to calculate points

The admission point system is used to measure your academic achievement based on your school-leaving results. Your school-leaving subject grades or percentages are converted into points as per the table (see Table 1) and based on your qualification. These points are added up to arrive at the number of points you have obtained.

GENERAL ADMISSIONS INFORMATION (CONTINUED)



Table 1

POINTS	GCE			GCSE					SENIOR CERTIFICATE			IB	
	A-LEVEL/ HSC	AS	COSC	HIGCSE	IGCSE	BGCSE	LGCSE	SGCSE	NSC	HG	SG	HL	SL
12	A											7	
11	B											6	
10	C	a		1					7	A		5	7
9	D	b		2					6	B		4	6
8	E	c	A	3	A*,A	A*,A	A*,A	A*	5	C	A	3	5
7		d	B		B	B	B	A	4	D	B	2	4
6	0/S	e	C	4	C	C	C	B	3	E	C		3
5			D		D	D	D	C	2		D		2
4			E		E	E	E	D			E		
3								E					
0					F	F		F			F		
								G					

3. Important points to remember when applying:

- All students can apply in person or using the online application form available on the website. Please read the "Steps to Apply" document available on the application portal before applying.
- Clear certified copies of all relevant educational certificates.
- Clear certified copies of Omang/passport/identity card.
- Please read the Fee Structure and Policy document available on the website before applying.

EMPLOYABILITY AND OUR GRADUATES

Botho University offers quality support services and programmes that advance student access to learning, welfare, wellness and talent development through Student and Alumni Affairs Department (SAAD).



Services offered by the various units of the department include:

Career and Counselling Services

The unit is available to provide students with psycho-social support, career counselling and academic advising, to further students' personal and professional development.

Special Needs Support

The Special Needs Unit is responsible for managing the welfare of students with special learning needs. The services provided include but are not limited to:

- Special accommodation during exams
- Classroom support
- Resource Lab/Centre
- Individual Education Plan (IEP)

Internships and Placement

The Placement and Internship Unit deals with connecting students with appropriate internship opportunities and assisting graduates in seeking employment.

Alumni Relations

The Alumni Relations Unit aims to foster a lifelong relationship between the university and its graduates. Its intention is to build strong networks

with graduates, geared towards lifelong learning for alumni. Services rendered by this unit include:

- Career Development Support
- Lifelong learning
- Opportunity to mentor university students
- Alumni Community Impact Programmes
- Stay connected facility
- Career Fairs

Health and Wellness

The unit manages the health and wellness of students and staff. It manages the operations of the University clinic, HIV and AIDS policy, and medical emergency evacuations. Some of the services provided include:

- Assistance with minor illness
- Referrals to major clinics and hospitals
- Management of HIV and AIDS interventions and campaigns.
- Wellness programmes



EMPLOYABILITY AND OUR GRADUATES (CONTINUED)



Personal Development

This unit is mandated to teach students life skills. These skills will enable students to cope with tertiary life and life beyond the university. The Personal Development Unit manages and administrates the following:

- Personal Development
- First Year Experience
- Mentorship
- Development Workshops
- Motivation Sessions
- Entrepreneurship Development
- Leadership Programme

Community Engagement

Botho University is committed to the improvement of people's lives in various communities through skills development, entrepreneurship and community empowerment. This division encourages students to interact with communities in planning and implementing programmes and/or activities aimed at addressing the current demands and situations they are facing. The purpose of this partnership with communities is to improve the lives of people, empower communities to be self-reliant and to develop entrepreneurship skills. The division has an emphasis on instilling the values of volunteerism, Botho, spirit of giving and compassion.

Sports, Culture and Recreation

The unit seeks to contribute to academic performance and personal success by promoting welfare and wellness through talent enhancement and management. This unit has a variety of sporting and non-sporting clubs which seek to contribute to the development of each student in relation to the Botho Graduate Profile.



QUALITY & ACCOLADES

Registered Institution in the Kingdom of Eswatini

Approved by Eswatini Higher Education Council (EHEC) Kingdom of Eswatini.



BQA Registered and Accredited Institution in Botswana

Registered and Accredited as an Education & Training provider by Botswana Qualifications Authority (BQA)



Registered Institution in the Kingdom of Lesotho

Registered with Ministry of Education and Training and approved by Council on Higher Education, Kingdom of Lesotho



Registered Institution in the Republic of Namibia

Registered with the National Council for Higher Education in Namibia



HRDC Registered Institution

Botho University is registered with the Human Resource Development Advisory Council (HRDC) of Botswana.



BOS ISO 9001:2015 Certified Organisation

We are the only University in Botswana to be BOS ISO 9001:2015 certified - a clear indicator of our passion and commitment to quality. The BOS ISO 9001:2015 certification is considered "hard to obtain and difficult to maintain" by some of its recipients.



PMR Africa Golden Arrow Award 2014, Diamond Arrow Award 2015 and 2017

Winner of the PMR Africa "Golden and Diamond Arrow Awards" for excellence under the tertiary institutions category in Botswana as rated by organisations across Botswana.



ACCA Gold Partner

Botho University has been awarded "Gold" status by the Association of Chartered Certified Accountants (ACCA), UK.



AAT Best International Training Provider of the Year 2014 & 2018

Botho University is the only institution in Botswana to be nominated and also to win this award.



Rated by African Quality Rating Mechanism (AQRM)

Botho University's quality at programme level is rated "Good Quality" by the African Quality Rating Mechanism (AQRM), an initiative of the Commission of the African Union (AUC) to establish an African quality assurance system for higher education institutions.



BLENDED AND DISTANCE LEARNING CAMPUS



**STUDY ONLINE
STUDY FROM
ANYWHERE.**

**Bachelors
Degree**

US\$130/month
via easy installments*
(or) **US\$750/semester**

**Masters
Degree**

US\$195/month via
6 easy installments*
(or) **US\$1125/semester**



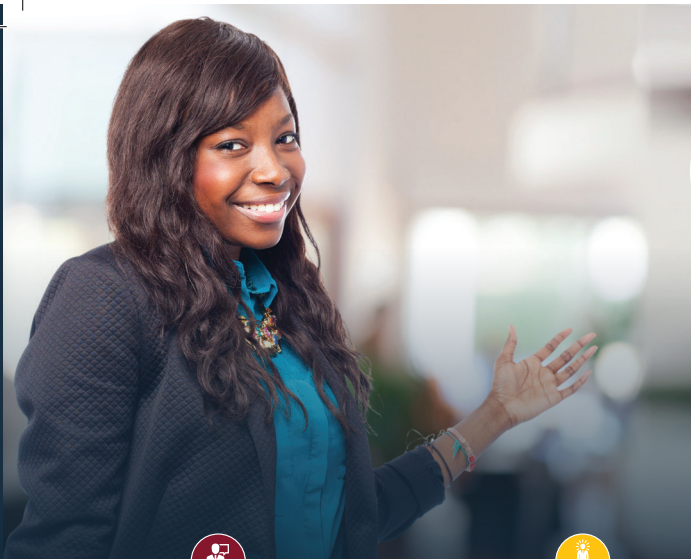
**BOTHU
UNIVERSITY**

EXCELLENCE | LEADERSHIP | INNOVATION

Botho University also offers high quality distance learning education using cutting edge learning management tools such as Black Board providing you with superior learning experience at an affordable cost.



For more information refer to: online.bothouniversity.com




BOTHO

•GRADUATE•
PROFILE

ENHANCING YOUR EMPLOYABILITY

The Botho Graduate Profile (BGP) is a list of qualities that all Botho University graduates are encouraged to learn and imbibe before they graduate.



CAREER ATTRIBUTES

KNOWLEDGEABLE:

Having expertise in at least one area, with a broad understanding of other disciplines.

HARDWORKING:

Motivated, result driven and committed to delivering work of the highest quality both independently and in a team.

ARTICULATE:

Able to communicate information eloquently, effectively and appropriately to a given audience.

INNOVATIVE & ENTREPRENEURIAL:

Able to identify opportunities and take measured risk to develop new and improved ideas, processes and products that create value.



PERSONALITY ATTRIBUTES

ETHICAL:

Having unquestionable integrity and accountability.

POSITIVE & CONFIDENT:

Being friendly, optimistic and resilient, and having high self-esteem with an ability to take decisions.

COLLABORATIVE:

Considerate of and able to work and communicate effectively with teams of people from different social and cultural backgrounds.

CRITICAL-THINKING:

Having the curiosity and open-mindedness to acquire new knowledge by analysing, reflecting on and evaluating information.



SOCIAL ATTRIBUTES

SOCIALLY

RESPONSIBLE:

Committed to bettering one's own community and society at large.

ENVIRONMENTALLY RESPONSIBLE:

Committed to conserving resources and protecting the environment.

**FIND YOUR
FUTURE@BU**

GABORONE CAMPUS: Botho Education Park, Kgale, Gaborone, Botswana | Tel: +267 363 5421 / 422 / 446

MASERU CAMPUS: West Wing, Thetsane, Maseru, Lesotho | Tel: +266 22247500

WINDHOEK CAMPUS: Office 1001, 11-13, Dr. Augustino Neto Street Ausspannplatz, Ausspannplatz, Erf 8299W, Windhoek, Namibia | Tel: +264 (0)61 255433 / +264 (0)61 254453

ESWATINI CAMPUS: Plot No 1206, Riverstone Mall, Manzini, Eswatini | Tel: +268 2505 2288

BLENDED & DISTANCE LEARNING CAMPUS: DL@bothouniversity.ac.bw | online.bothouniversity.com | Tel: +267 363 5477



BOTSWANA CAMPUS | LESOTHO CAMPUS | ESWATINI CAMPUS | NAMIBIA CAMPUS | BUL CAMPUS



BOS ISO 9001:2015 CERTIFIED ORGANISATION
www.bothouniversity.com

VERSION 1.2.1

E & O | Terms And Conditions Apply | For the Latest and Updated Prospectus Visit Our Website www.bothouniversity.com



BOTHO
UNIVERSITY
EXCELLENCE | LEADERSHIP | INNOVATION