



BOTHO
UNIVERSITY
VIBRANCE • INNOVATION • IMPACT



2023/24

PROSPECTUS

BOTHO UNIVERSITY

BOS ISO 9001:2015 Certified Organisation
www.bothouniversity.com



BOTHO
UNIVERSITY
VIBRANCE • INNOVATION • IMPACT

Botho University Anthem

Chorus:

We will stand and wave our flag
As we shout our name in a chant of victory
It is a life changing experience
Do more with Botho University

We are the stars
Of Botho University
We will take
The world by storm

Chorus:

We will stand and wave our flag
As we shout our name a chant of victory
It is a life changing experience
Do more with Botho University

TABLE OF CONTENTS



About Us

4



BU Across Campuses

8

Our Programmes

9



Faculty of Health And Education

10

Faculty of Business And Accounting

11

Faculty of Engineering And Technology

16

F
A
C
U
L
T
I
E
S



General Admissions Information

21

Employability and Our Graduates

23

Quality and Accolades

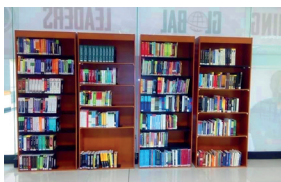
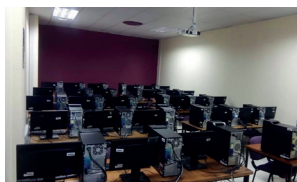
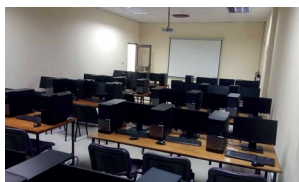
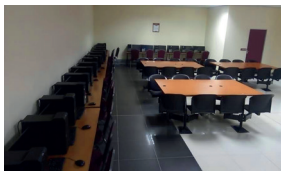
25

Blended and Distance Learning Campus

26



ABOUT US



Botho University was established in 1997 and has rapidly evolved over the years to become a leading multidisciplinary high-quality tertiary education provider. Botho University was one of the first local tertiary institutions in Botswana to be accredited by the Human Resources Development Council (HRDC).

Botho University have expanded into the SADC region and beyond over the years and is duly accredited and recognized in the countries where it operates as follows: Eswatini Higher Education Council (ESHEC), Lesotho Council of Higher Education (CHE), Namibia Council of Higher Education (NCHE) Ghana Tertiary Education Council (GTEC). Botho University, Eswatini Campus received a further full institutional registration by ESHEC in February 2023.

BU's goal in Eswatini is to offer academic programmes of high intellectual and entrepreneurial nature in fields that meet the needs of the Eswatini economy, in order to develop a nation that is already proud of its culture. Focusing on teaching and learning, research, community engagement and internalization, Botho University Eswatini will constantly address the unique needs, competencies and characteristics of the Eswatini environment, with the ultimate goal of cementing our position as the preferred higher education institution within the Eswatini Higher

Education sector.

This will be achieved through the offering of academic programmes from the Faculties of Engineering and Technology, Health and Education and Business and Accounting. This approach will unearth the envisioned focus areas of business, accounting, computing, health and education. It is important that the identified focus areas need to be addressed in an all-inclusive manner to achieve the vision and strategic objectives of the University.

Botho University Eswatini is determined and passionate about contributing to the economic development of Eswatini, and to achieve this, the university will form solid and respectful partnerships that focus on the complex needs of Eswatini. The establishment, alignment and conformity to the Eswatini Higher Education landscape was informed by various national and regional policies, plans and protocols including the Eswatini Higher Education Act; SADC Protocol on Education and Training, National Education and Sector Policy 2018 and the National Development Strategy (NDS).

The Eswatini Botho University Campus is located in the city of Manzini, the second largest urban centre behind Mbabane with a population of 78, 000. The local currency is the Eswatini Lilangeni. The population is primarily ethnic Swazis. The language is Swazi (siSwati in native

ABOUT US (CONTINUED)



form). The country is known for its best cultural event the Umhlanga Reed Dance, one of the biggest and most spectacular cultural events in Africa. The economy of Eswatini is diversified with agriculture, mining, manufacturing and forestry which contributes to 13 per cent of GDP.

Botho University has several partnerships with well-known regional and international institutions such as University of Venda-RSA, KTH Royal Institute of Technology-Sweden, Black Hills State University-USA, University of Louisville-USA, Indian School of Mines-India, Manipal University in India and recently World Tourism Forum Lucerne-Switzerland. Baswati Students studying with Botho University have an immense opportunity to take advantage of these international partnerships through various collaborative efforts that may include student exchange programmes and internships, thus giving them incredible international exposure. Botho University firmly believes in providing its students with a superior learning environment.

THE LEARNING MANAGEMENT SYSTEMS

As a modern university, Botho University prides itself on being a technology driven institution from inception. The COVID 19 pandemic in 2020 helped BU to demonstrate its strength when teaching and learning migrated from classroom teaching and learning to online learning with ease. The Faculty and students from various campuses were able to adapt easily when the university fully moved from “non-contact” teaching to online learning. During the COVID-19 pandemic, Botho University deployed high- end technology to ensure that learning and teaching continued in spite of the restrictions that posed a threat to many educational institutions dependent on teaching and learning taking place on physical campuses.

Botho University has invested in a robust

state- of-the-art mobile learning and e-Learning infrastructure called Blackboard that has been the backbone of online learning for both classroom and blended and distance learning. All Botho University students and staff use Blackboard Learn and its mobile application to enhance teaching and learning.

Blackboard Learn is a Virtual Learning Environment (VLE) that supports teaching and learning by allowing students to access course materials online. Blackboard App and Blackboard Instructor App are the mobile versions of Blackboard, which students can access through the use of smartphones or tablets. Blackboard has a plethora of features and functionality that provides an unparalleled level of student engagement, such as discussion forums, wikis, blogs, and journals, as well as advanced content management features that allow for textual, audio, visual, and pictorial content. In addition, Blackboard provides powerful assessment features that allow plagiarism check as well as comprehensive reporting and analytics for easy identification of “at-risk” students.

Apart from Blackboard, BU also has an industry leading anti-plagiarism check tool called “Turnitin” making its assessment activities stringent and of international quality. Through the Blackboard students and staff have easy and full access to e-Library facilities. The University E-Library has the following Databases: Emerald,



ABOUT US (CONTINUED)



Ebscohost, Proquest, Dawsonera, Jstor and BU Repository, for access to all the E-Books, E-Journals, theses, dissertations, case studies and many more resources.

CORPORATE TRAINING DEPARTMENT

Since 1997, Botho University has been offering a diverse range of programmes for in-service professionals and organisations. Under the Corporate Training Department, there are over 200 short-term professional development programmes, which can be customized to meet the client's requirements. The department in liaison with the faculty develops professional development programmes to improve productivity, performance, and profitability.

FUTURE PLANS

Botho University's strategic focus is to increase student diversity by attracting international students. Apart from Botswana, Lesotho, Namibia and Eswatini, BU campuses (including

physical and distance learning campus) attract several students across Africa. BU's diverse community includes students from South Africa, Namibia, Zimbabwe, Zambia, Democratic Republic of Congo and Ethiopia to name a few.

BOTHO'S PARTNERSHIPS

Botho University has partnerships with world renowned institutions in Africa, India, Europe and America. These partnerships are strategic and are meant to expose both staff and students to international experiences. This is done through exchange programmes, research and teaching and learning collaborations.

OUR QUALITY

Botho University is driven by the core values of integrity, excellence, and inclusiveness and aims to produce well-rounded, entrepreneurial, and globally employable graduates with the attitude, knowledge, skills, and competencies to create value and drive productivity increases needed

ABOUT US (CONTINUED)



to catalyse sustainable economic growth. The focus on quality has resulted in Botho University becoming a BOS ISO 9001:2015 certified institution. With an impeccable reputation for quality in the market, Botho University graduates are leading the way in transforming the economy.

THE BLENDED AND DISTANCE LEARNING CAMPUS

The Blended and Distance Learning Campus (BDLC), which started operating in 2017 is driven by high levels of integrity, excellence, and inclusiveness, which are also the core values of the institution. These values are coupled with state of the art teaching infrastructure, qualified staff, and accredited industry specific programmes offering the learner skills to be employable, entrepreneurial, and well rounded. BDLC offers undergraduate and postgraduate cross-disciplinary programmes that are unique and designed to suit the current and future job market.

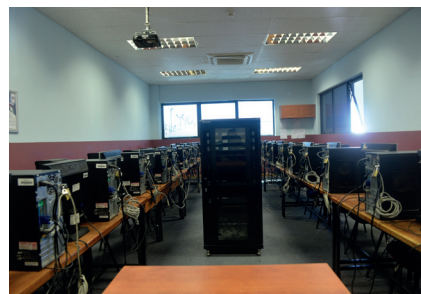
NAMIBIA CAMPUS

Botho University, Namibia opened doors to students in August 2018 after duly getting registered with NCHE offering 100% scholarships to the students of Namibia. BU Namibia is now officially recognized by the Namibian Qualifications Authority (NQA) and admits students eligible for NSFAS scholarship and self-sponsored students. BU Namibia offers degree programmes in the Faculty of Business & Accounting, Faculty of Health and Education and Faculty of Engineering & Technology

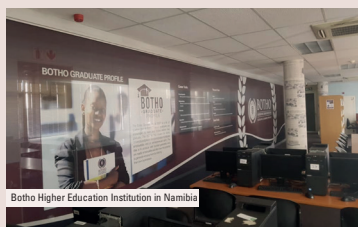
GHANA CAMPUS

The Ghana Campus, established in 2022 is the first BU campus in West Africa. Botho University Ghana aspires to be an integral player in establishing an economically diversified, fast growing, and prosperous Ghana built on integrity, excellence, inclusiveness, and financial viability.

The programmes currently under accreditation are in the key fields of Accounting, Business, Computing and Health.



BU ACROSS CAMPUSES



OUR PROGRAMMES



	FACULTY OF HEALTH AND EDUCATION
PROGRAMME CODE	PROGRAMMES
HIM - 8BO - 23	Bachelor of Science in Health Information Management
	FACULTY OF BUSINESS AND ACCOUNTING
PROGRAMME CODE	PROGRAMMES
BCO - 8BO - 20	<u>Accounting Programmes</u> Bachelor of Commerce in Accounting
BBA - 8BM - 21	<u>Business Programmes</u> Bachelor of Business Administration in Business Management
ACA - 8PL - 17 CMA - 8AD - 11	<u>Professional Accounting Programmes</u> ACCA - Association of Chartered Certified Accountants CIMA - Chartered Institute Of Management Accountants (Member of The Chartered Institute of Management)
	FACULTY OF ENGINEERING AND TECHNOLOGY
PROGRAMME CODE	PROGRAMMES
COM - 8BO - 23	Bachelor of Science in Computing
MCO - 8BO - 20	Bachelor of Science in Mobile Computing
NCF - 8BO - 23	Bachelor of Science in Network Security and Computer Forensics

*Please contact the Admissions Department to find out which programmes are available in your choice campus of study.

*Check our website for the latest updates on Campus Learning programmes and Distance Learning programmes by visiting www.bothouniversity.com

Bachelors of Science in Health Information Management

Programme details:

The programme consists of core (required) and elective modules as follows. Some modules may have pre-requisites (i.e. may require the student to pass another module or set of modules first). Some modules may be co-requisite (i.e. such modules are required to be taken together). The number at the end of the module in parenthesis indicates the credit load of the module. 1 credit is equal to 10 hours of learning (guided, in-class and independent combined); therefore a 10-credit module requires on average 100 hours of learning from the student.

Core modules:

- C5-CE1-20: Computer and its Essential 1 (10)
- D6-LHP-23: Law & HIM Practice (10)
- D6-IAP-21: Introduction to Anatomy & Physiology (20)
- B5-BM1-20: Business Management 1 (10)
- D6-HET-21: Health Ethics (10)
- C6-CE2-20: Computer and its Essential 2 (10)
- B6-BM2-20: Business Management 2 (10)
- D6-IPP-21: Introduction to Pathology & Pharmacology (20)
- B5-PMK-20: Principles of Marketing (10)
- D6-AWS-20: Academic writing for STEM (10)
- D6-IMT-21: Introduction to Medical Terminology (10)
- D5-BLS-21: Basic Life support & Emergency care (10)
- D5-IEH-21: Introduction to E-Health (10)
- B6-OPM-20: Operations Management (10)
- D5-MDB-21: Medical Database 1(10)
- D5-IGH-23: Introduction to Global Health (10)
- D6-EPI-13: Epidemiology (20)
- D6-ITR-21: Introduction to Medical Transcription (10)
- D5-CHA-21: Computing in Health Administration (10)
- D7-BIO-23: Biostatistics (20)
- B6-PTM-21: Procurement & Tender Management (10)
- D7-DMI-23: Data Management & Information Governance (20)
- D6-PCM-23: Principles of Community Health (10)
- D7-HIS-21: Health Information Systems (20)
- D6-FHI-23: Fundamentals of Health Insurance (10)
- D7-DCO-13: Disease Coding (20)
- D7-RME-23: Research Methods (10)
- D7-HIR-21: Health Information Risk Management (10)

- B8-ENI-20: Entrepreneurship & Innovation (20)
- D7-RPP-23: Research Project Proposal (10)
- D7-PPR-21: Professional Practice in HIM (40)
- D7-RPO-23: Research Project (20)

Elective Modules:

- A5-IFA-20: Introduction to Financial Accounting (10)
- B6-FFM-20: Fundamental of Financial Management (10)
- D7-HEC-23: Health Economics (10)
- B7-PRM-20: Project Management (10)
- B7-HRM-20: Human Resource Management (10)

Recommended full-time study path (4 years)

Semester 1

- C5-CE1-20, D6-LHP-23, D6-IAP-21, B5-BM1-20, D6-HET-21

Semester 2

- C6-CE2-20, B6-BM2-20, D6-IPP-21, B5-PMK-20, D6-AWS-20

Semester 3

- D6-IMT-21, D5-BLS-21, D5-IEH-21, B6-OPM-20, D5-MDB-21

Semester 4

- D5-IGH-23, D6-EPI-13, D6-ITR-21, D5-CHA-21
Select one (A5-IFA-20, B6-FFM-20)

Semester 5

- D7-BIO-23, B6-PTM-21, D7-DMI-23, D6-PCM-23

Semester 6

- D7-HIS-21, D6-FHI-23, D7-DCO-13, D7-RME-23

Semester 7

- D7-HEC-23, B7-PRM-20, B7-HRM-20
Select two (D7-HEC-23, B7-PRM-20, B7-HRM-20)

Semester 8

- D7-PPR-21, D7-RPO-23

Admissions Criteria

- 1)** SGCSE/equivalent with minimum Credit (C) in 5 subjects including English and Biology/ Double Science.
- 2)** Applicants in possession of a Diploma or Higher Diploma in related field may be given exemptions based on the credit point equivalency.
- 3)** For enquiries and more information please visit our website: www.bothouniversity.com

Bachelor of Commerce in Accounting

Programme details:

The programme consists of core (required) and elective modules as follows. Some modules may have pre-requisites (i.e. may require the student to pass another module or set of modules first). Some modules may be co-requisite (i.e. such modules are required to be taken together). The number at the end of the module in parenthesis indicates the credit load of the module. 1 credit is equal to 10 hours of learning (guided, in-class and independent combined); therefore a 10-credit module requires on average 100 hours of learning from the student.

Core modules:

- A6 - IFA-20: Introduction to Financial Accounting (10)
- A6 - CP1-20: Computerised Accounting 1 (10)
- A6 - TA1-20: Taxation 1 (10)
- A6 - COA-20: Cost Accounting (10)
- A6 - CP2-20: Computerised Accounting 2 (10)
- A6 - CA1-20: Corporate Administration 1 (10)
- A6 - FA1-17: Financial Accounting 1 (10)
- A6 - ASS-20: Audit and Assurance (20)
- A6 - FM1-20: Financial Management 1 (10)
- A6 - CSC-20: Corporate Secretaryship (10)
- A7 - FA2-20: Financial Accounting 2 (10)
- A7 - TA2-20: Taxation 2 (10)
- A7 - MAC-20: Management Accounting (10)
- A7 - FIR-20: Financial Reporting (20)
- A7 - FM2-20: Financial Management 2 (10)
- A7 - COL-20: Company Law (20)
- A7 - BAV-20: Business Analysis and Valuation Using Financial Statements (10)
- A7-CA2-20: Corporate Administration 2 (10)
- A7 - PSR-20: Public Sector Financial Reporting (20)
- A7 - RP1-20: Research Project 1: Proposal Writing (20)
- A7 - PRA-20: Professional Practice in Accounting (40)
- A7 - RP2- 20: Research Project 2: Dissertation
- B5 - BS1 - 17: Business Mathematics & Statistics 1 (10)

- B5 - LAB - 20: Legal Aspects of Business (10)
- A5 - FBF - 20: Fundamentals of Business & Finance (10)
- B5 - BM1 - 20: Business Management 1 (10)
- B5 - PMK-20: Principles of Marketing (10)
- B6 -BS2-17: Business Mathematics & Statistics 2 (10)
- B6-AWB-20: Academic Writing for Business (10)
- B6 - BEA-20: Business Ethics and Assurance (10)
- B5-MIE-17: Micro- economics (10)
- B6 - MAE-17: Macro Economics (10)
- B7 - RMB-20: Research Methods in Business (10)
- B7-CGV-20: Corporate Governance (10)
- C5 - IMO - 20: Introduction to MS Office (10)
- B5-BM2-20 Business Management 2

Elective Modules

- A7-CUA-20: Computerised Auditing (10)
- A7-RMI-20: Risk Management & Insurance (10)
- A7-TA3-20: Advanced Taxation 3 (10)
- A7-AS2-20: Audit & Assurance 2 (10)
- A7-CS2-20: Corporate Secretaryship (10)
- B8-SOE-21: Social Entrepreneurship (20)
- E8-ISD-17: Innovation for Sustainable Development (20)
- B8 - ENI-20: Entrepreneurship and Innovation (20)

Semester 1

- C5-IMO-20,D5-AWB-20,B5-BS1-17,B5-LAB-20, A5- FBF-20 B5-BM1- 20,

Semester 2

- B5-PMK-20,B5-BS2-17,A5-IFA-20,B6-BEA-20, B6-BM2-17, A6-CP1-20

Semester 3

- A6- TA1-20, B5-MIE-17, A6-COA-20, A6- CP2-20, A6 - CA1-20, A6- FA1-17

Semester 4

- B6-MAE-17, A6-ASS-20, A6 - FM1-20, A6-CSC-20, A7- FA2-20

Semester 5

- A7-TA2-20 A7-MAC-20, A7-FIR-20

Semester 6

FACULTY OF BUSINESS AND ACCOUNTING

(CONTINUED)

- A7 - FM2-20, B7- RMB-20, A7-COL-20, A7-BAV-20 Elective Modules any one (A7-CS2-20, A7- CUA-20, A7-RMI-20, A7-TA3-20,A7-AS2-20)

Semester 7

- A7-PSR- 20, A7-RP1-20,B7-CGV-20,A7-CA2-20

Elective Modules any one (B8-ENI-20, B8-SOE-21, E8-ISD-17)

Semester 8

- A7-PRA-20, A7-RP2-20

Admission criteria

1) SGCSE/equivalent with minimum Credit (C) in 5 subjects including English and Mathematics.

2) Applicants in possession of a Diploma or Higher Diploma in related field may be given exemptions based on the credit point equivalency.

3) For enquiries and more information please visit our website: www.bothouniversity.com

Bachelor of Business Administration in Business Management

Programme details:

The programme consists of core (required) and elective modules as follows. Some modules may have pre-requisites (i.e. may require the student to pass another module or set of modules first). Some modules may be co-requisite (i.e. such modules are required to be taken together). The number at the end of the module in parenthesis indicates the credit load of the module. 1 credit is equal to 10 hours of learning (guided, in-class and independent combined); therefore a 10-credit module requires on average 100 hours of learning from the student.

Core Modules

- C5-IMO-20: Introduction to MS Office (10)
- A5-AWB-20: Academic Writing for Business (10)
- B5-BS1-17: Business Mathematics & Statistics 1 (10)
- B5-LAB-20: Legal Aspects of Business (10)
- A5-IFA-20: Introduction to Financial Accounting (10)
- B5-BM1-20 - Business Management 1 (10)
- B5-PMK-20: Principles of Marketing (10)
- B5-BS2-17: Business Mathematics & Statistics 2(10)
- B6-MIE-17: Microeconomics(10)
- A6-FA1-17: Financial Accounting 1 (10)
- B6-BM2 -20: Business Management 2 (10)
- B7-CRM -20: Customer Relationship Management (10)
- B6-MAE-17: Macroeconomics (10)
- B6-SBM-21: Small Business Management (10)
- B6-BFM-20: Fundamentals of Financial Management (10)
- A6-FA2-17: Financial Accounting 2 (10)
- B6-OBE-20: Organizational Behaviour (10)
- B6-BIS-20: Business Information Systems (10)
- B6-OPM-20: Operations Management (10)
- A6-CAF -17: Computerized Accounting (10)
- B6-COB-21: Consumer Behaviour (10)
- B6-MKT-20: Marketing Management (10)
- A6-COA-20: Cost Accounting (10)
- B6-PMT-21: Purchasing Management (10)
- B7-QUM-20 - Quality Management (10)
- B7-CFI-21 - Corporate Finance (10)
- B7-PRM-20 - Project Management (10)
- B7-IEM-20 - Import and Export Management (10)
- B7-EBS-20 - E – Business (10)
- B7-HRM-20-Human Resource Management (10)
- B7-BRM-21- Research Methods in Business (10)
- B7-TLM-21-Transport and Logistics Management (10)
- B7-KNM-21 - Knowledge Management (10)
- B7-STM-20 - Strategic Management (10)
- B7-RP1-20 - Research Project 1: Proposal Writing (10)
- B7-PPB-20 - Professional Practice in Business(40)
- B7-RP2-20 - Research Project 2: Dissertation (20)

Elective Modules

- B7-MNC-21: Managing Consulting (10)
- B7-IBM-20: International Business Management (10)
- B7-FBM-20: Family Business Management (10)
- B7-BEC-21: Business Ethics and Corporate Social Responsibility (10)
- B7-CHM-20: Change Management (10)
- B7-CGV-20: Corporate Governance (10)
- B7-BMT-20: Brand Management (10)
- B8-ENI-20: Entrepreneurship and Innovation (20)
- B8-SOE-21: Social Entrepreneurship (20)
- E8-ISD-18: Innovation for Sustainable Development (20)

Semester 1

- C5-IMO-20, D5-AWB-20, B5-BS1-17, B5-LAB-20, A5-IFA-20, B5-BM1-20

Semester 2

- B5-PMK-20, B5-BS2-17, B6-MIE-17, A6-FA1-17, B6-BM2 -20, B7-CRM -20

Semester 3

- B6-MAE-17, B6-SBM-21, B6-FFM-20, A6-FA2-17, B6-OBE-20, B6-BIS-20

Semester 4

- B6-OPM-20, A6-CAF-17, B6-COB-21, B6-MKT-20, A6-COA-20, B6-PMT-21

Semester 5

- B7-QUM-20, B7-CFI-21, B7-PRM-20, B7-IEM-20

Elective Modules any two (B7-MNC-21, B7-IBM-20, B7-FBM-20)

Semester 6

- B7-EBS-20, B7-HRM-20, B7-BRM-21, B7-TLM-21

Elective Modules any two (B7-BEC-21, B7-CHM-20, B7-CGV-20, B7-BMT-20)

Semester 7

- B7-KNM-21, B7-STM-20, B7-RP1-20
- Elective Modules any one (B8-ENI-20, B8-SOE-21, E8-ISD-18)

Semester 8

- B7-PPB-20, B7-RP2-20

Admission criteria

- 1) SGCSE/equivalent with minimum Credit (C) in 5 subjects including English and Mathematics.
- 2) Applicants in possession of a Diploma or Higher

Diploma in related field may be given exemptions based on the credit point equivalency.

3) For enquiries and more information please visit our website: **www.bothouniversity.com**



FACULTY OF BUSINESS AND ACCOUNTING

(CONTINUED)

ACCA - Association of Chartered Certified Accountants

Programme details:

ACCA is a great choice for professional development. It can offer you excellent job prospects. Because accountants play a central function in any business, accountancy offers you prestige and responsibility. Apart from successfully passing the papers, you will also need to complete three years relevant experience. A complete ACCA is equivalent to a master's degree.

Learning, Teaching & Assessment

Guided Learning: The students will be exposed to lectures, tutorials and supervised study by the teachers.

Lectures: The teacher will present materials either orally or by the use of other teaching aids.

Online Learning: The lecture notes, online tests, additional study material, discussion group and links to related subjects will be made available to students.

Independent Learning: The students will have to undertake self-directed independent learning where the teacher acts as a guide.

Assessment: This will be of various types. It could be written or objective type (multiple choice) or a combination of both. For details refer to ACCA website www.accaglobal.com

Year 1: Semester 1 & 2

Semester 1

- BT- Business & Technology
- MA - Management Accounting
- FA - Financial Accounting

(If a student exits after successful completion of semester 1 then the student is eligible for a **ACCA - Diploma in Accounting and Business** qualification)**Semester 2**

- LW - Corporate and Business Law
- TX - Taxation

Year 2: Semester 3 & 4

Semester 3

- FR - Financial Reporting
- AA - Audit and Assurance

Semester 4

- FM - Financial Management
- PM - Performance Management
- EPS - Ethics and Professional Skills

(If a student exits after successful completion of semester 4 then the student is eligible for a **ACCA - Advanced Diploma in Accounting and Business** qualification)

Semester 5

- SBR - Strategic Business Reporting
- SBL - Strategic Business Leader

Semester 6 (any two papers)

- AFM - Advanced Financial Management
- APM - Advanced Performance Management
- AAA - Advanced Audit and Assurance
- ATX - Advanced Taxation

*** The sequence of the papers being taught may be changed with the explicit permission of the Dean.**

The above information is true at the time of publishing.

For latest updates and for more details refer to the ACCA official website: www.accaglobal.com

Admissions Criteria

Applicant should have passed 'A' level or an equivalent qualification as required by ACCA <http://www.accaglobal.com/in/en/qualifications/glance/acca/minimum-entrance-requirements.html>



CIMA - Chartered Institute Of Management Accountants (Member of The Chartered Institute of Management)

Learning, Teaching & Assessment

Guided Learning: The students will be exposed to lectures, tutorials and supervised study guided by the teachers.

Lectures: The teacher will present materials either orally or by the use of other teaching aids.

Online Learning: The lecture notes, on-line tests, additional study material, discussion groups and links to related subjects, amongst other things, will be made available to students.

Independent Learning: The students will have to do self-directed independent learning where the teacher will be acting as a guide.

Assessment: This will be of various types. It could be written or online objective type (multiple choices) or a combination of both. For details refer to CIMA website www.cimaglobal.com

Core Modules:

- B2: Fundamentals of Management Accounting (30)
- B3: Fundamentals of Financial Accounting (30)
- B1: Fundamentals of Business Economics (30)
- B4: Fundamentals of Ethics, Corporate Governance and Business Law (30)
- E1: Organisational Management (30)
- P1: Management Accounting (30)
- F1: Financial Reporting & Taxation (30)
- OCS: Operational Case Study (30)
- E2: Project & Relationship Management (30)
- P2: Management Accounting (30)
- F2: Advanced Financial Reporting (30)
- MSC: Management Case Study (30)
- E3: Strategic Management (30)
- P3: Risk Management (30)

- F3: Financial Strategy (30)
- SCS: Strategic Case Study (30)

Semester 1

- B2, B3

Semester 2

- B1, B4

Semester 3

- E1, P1

Semester 4

- F1, OCS

Semester 5

- E2, P2

Semester 6

- F2, MCS

Semester 7

- E3, P3

Semester 8

- F3, SCS

Typical Study Schedule (credits shown in brackets)

***The sequence of the papers being taught may be changed with the explicit permission of the Dean.**

The above information is true at the time of publishing. For latest updates and for more details on practical work experience etc. please refer to the CIMA official website: www.cimaglobal.com

Admissions Criteria

1) Applicants are expected to have successfully completed secondary schooling. The typical entry requirement is BGCSE or IGCSE (in Botswana), LGCSE (in Lesotho) or other equivalent secondary school qualification.

2) BGCSE/equivalent with minimum Pass (D) in 5 subjects including English and minimum Credit (C) in Mathematics.

3) For more detailed information on admission criteria and exemptions please refer to the CIMA website www.cimaglobal.com

4) For enquiries and more information please visit our website: www.bothouniversity.com

Bachelors of Science in Computing

Programme details:

The programme consists of core (required) and elective modules as follow. Some modules may have pre-requisites (i.e. may require the student to pass another module or set of modules first). The number at the end of the module in parenthesis indicates the credit load of the module. 1 credit is equal to 10 hours of learning (guided, in-class and independent combined); therefore a 10-credit module requires on average 100 hours of learning from the student. B.Sc. in Computing has three specialisation areas including: Software Engineering (SE), Network & Infrastructure Management (NW&IM).

Core modules:

- C5-CE1-20: Computer and its Essentials 1 (10)
- C6-PIE-20: Professional Issues and Ethics (10)
- C5-MAT-20: Mathematics (10)
- C5-OSH-11: Operating System and Hardware (20)
- C5-PLD-20: Programming Logic and Design (10)
- C6-DMA-19: Discrete Mathematics (20)
- C6-CE2-20: Computer and its Essentials 2 (10)
- C6-CSA-20: Computer System Architecture (10)
- D6-AWS-20: Academic Writing for STEM (10)
- C6-NEF-20: Networking Fundamentals (10)
- C6-DMS-20: Database Management System (10)
- C6-DMP-20: Database Management Practice Lab (10)
- C6-IPC-11: Introduction to Programming using C++ (20)
- C6-LIE-19: Linux Essentials (20)
- C6-DMO-11: Database Management Using Oracle (20)
- C6-WDD-20: Web Design and Development (10)
- C6-WDP-20: Web Design Practice Lab (10)
- C7-SEN-11: Software Engineering (20)
- C7-JAV-11: Programming using Java (20)
- C7-ITE-20: Internet Technologies (10)
- C7-RMS-20: Research Methods for STEM (10)
- C7-PPC-20: Professional Practice in Computing

(40)

- C8-RP2-20: Research Project 2: Dissertation (20)
- C7-ITP-11: IT Project Management (20)
- C7-ADJ-11: Advanced Java (20)
- C7-DSA-11: Data Structures and Algorithms (20)
- C7-RP1-20: Research Project 1: Proposal Writing (10)
- B8-ENT-13: Entrepreneurship and Innovation (20)
- C8-HCI-23: Human Computer Interaction (10)
- C7-JAV-11: Programming Using Java (20)
- C6-RSW-20: Routing and Switching (10)
- C6-RSL-20: Routing and Switching Lab (10)
- C7-SCS-20: Scripting for Cybersecurity (20)
- C6-SCN-20: Scaling Network (20)
- C7-WN1-11: Windows Network Administration (20)
- C7-ITM-20: IT infrastructure Management (10)
- C7-LWD-20: LAN and WAN Design (10)
- C7-LWL-20: LAN and WAN Design Lab (10)
- C7-WN2-11: Windows Network Administration 2 (20)
- C8-LNA-11: Linux Network Administration (20)
- C7-PPC-20: Professional Practice in Computing (40)
- C8-RP2-20: Research Project 2: Dissertation (20)

Elective modules:

- C7-NSE-20: Network Security (10)
- C7-WNS-20: Wireless Network Security (10)
- C7-CP1-11 -Designing Creative Publications - 1
- C7-PN1 -11 - Programming using .NET 1
- C8-CP2-11: Designing Creative Publications I (20)
- C8-PN2-11: Programming using .NET2 9(20)

Recommended full-time study path for Software Engineering (4 years):

Semester 1:

- C5-CE1-20, C6-PIE-20, C5-MAT-20, C5-OSH-11, C5-PLD-20

Semester 2:

- C6-DMA-19, C6-CE2-20, C6-CSA-20, D6-

AWS-20, C6-NEF-20

Semester 3:

- C6-DMS-20, C6-DMP-20, C6-IPC-11, C6-LIE-19

Semester 4:

- C6-DMO-11, C6-WDD-20, C6-WDP-20, C7-SEN-11

Semester 5:

C7-JAV-11, C7-ITE-20, C7-RMS-20 Select anyone from (C7-PN1-11, C7-CP1-11)

Semester 6:

C7-ITP-11, C7-ADJ-11, C7-DSA-11

Semester 7:

C7-RP1-20, B8-ENT-13, C8-HCI-23 Select anyone from (C8-CP2-11, C8-PN2-11)

Semester 8:

- C7-PPC-20, C8-RP2-20

Recommended full-time study path for Network and Infrastructure Management (4 years):

Semester 1:

- C5-CE1-20, C6-PIE-20, C5-MAT-20, C5-OSH-11, C5-PLD-20

Semester 2:

- C6-DMA-19, C6-CE2-20, C6-CSA-20, D6-AWS-20, C6-NEF-20

Semester 3:

- C6-DMS-20, C6-DMP-20, C6-IPC-11, C6-LIE-19

Semester 4:

- C7-JAV-11, C6-RSW-20, C6-RSL-20, C7-SCS-20

Semester 5:

- C6-SCN-20, C7-WN1-11, C7-ITM-20, C7-RMS-20

Semester 6:

- C7-ITP-11, C7-LWD-20, C7-LWL-20, C7-WN2-11

Semester 7:

- C7-RP1-20, C8-LNA-11, B8-ENT-11 Select anyone from (C7-NSE-20, C7-WNS-20)

Semester 8:

- C7-PPC-20, C8-RP2-20

Admissions Criteria

1) SGCSE/equivalent with minimum Credit (C) in 5 subjects including English and Mathematics

2) Applicants in possession of a Diploma or Higher Diploma in related field may be given exemptions based on the credit point equivalency.

3) For enquiries and more information please visit our website: www.bothouniversity.com

Bachelors of Science in Mobile Computing

Programme details:

The programme consists of core (required) and elective modules as follows. Some modules may have pre-requisites (i.e. may require the student to pass another module or set of modules first). Some modules may be co-requisite (i.e. such modules are required to be taken together). The number at the end of the module in parenthesis indicates the credit load of the module. 1 credit is equal to 10 hours of learning (guided, in-class and independent combined); therefore a 10-credit module requires on average 100 hours of learning from the student.

Core modules:

- C5-CE1-20: Computer and its Essentials 1 (10)
- C6-PIE -20: Professional Issues and Ethics (10)
- C5-MAT-20: Mathematics (10)
- C5-OSH-11: Operating Systems and Hardware :(20)
- C5-PLD-20: Programming Logic and Design (10)
- C6-MCE-20: Mobile Computing Essentials (20)
- C6-CE2-10: Computer and its Essentials 2 (10)
- C6-CSA-20: Computer System Architecture (10)
- C6-MHT-20: Mobile Hardware Troubleshooting (10)
- D6-AWS-20: Academic Writing for STEM (10)
- C6-DMS-20: Database Management Systems (10)
- C6-DMP-20: Database Management Practice Lab (10)

FACULTY OF ENGINEERING AND TECHNOLOGY (CONTINUED)

- C6-MDC-20: Mobile Data Communications (10)
- C6-MOS-20: Mobile Operating Systems (10)
- C6-PUC-20: Programming using C++ (20)
- C6-MDB-20: Mobile Databases (10)
- C6-SEN-20: Software Engineering (10)
- C6-PUJ: Programming Using Java (20)
- C6-DSA-20: Data Structures and Algorithm (10)
- C6-WDD-20: Web Design and Development (10)
- C6-WDP-20: Web Design Practice Lab (10)
- C7-MA1-20: Mobile Application Development (10)
- C7-MAN-20: Mobile Adhoc Networks (10)
- C7-ITE-20: Internet Technologies (10)
- C7-SIA-20: SMS Integration and Applications (10)
- C7-HMD-20: Hybrid Mobile Application Development (10)
- C7-MAS-20: Mobile Application Security (10)
- C7-MA2-20: Mobile Application Development -2 (10)
- C7-CCS-20: Cloud Computing and Security (10)
- C7-RMS-20: Research Methods for STEM (10)
- C7-MGD-20: Mobile Game Development (10)
- C7-RP1-20: Research Project 1: Proposal Writing (10)
- C7-MFO-20: Mobile Forensics (10)
- B8-ENI-20: Entrepreneurship and Innovation (20)
- C7-PPC-20: Professional Practice in Computing (40)
- C8-RP2-20: Research Project 2: Dissertation (20)

Elective modules:

- C7-CCS-20: Cloud Computing and Security (10)
- C7-RMS-20: Research Methods for STEM (10)
- C7-MGD-20: Mobile Game Development (10)
- C7-RP1-20: Research Project 1: Proposal Writing (10)
- C7-MFO-20: Mobile Forensics (10)
- B8-ENI-20: Entrepreneurship and Innovation (20)
- C7-PPC-20: Professional Practice in Computing (40)
- C8-RP2-20: Research Project 2: Dissertation (20)

Recommended full-time study path (4 years):

Semester 1:

- C5-CE1-20, C6-PIE -20, C5-MAT-20, C5-OSH-11, C5-PLD-20

Semester 2:

- C6-MCE-20, C6-CE2-10, C6-CSA-20, C6-MHT-20, D6-AWS-20

Semester 3:

- C6-DMS-20, C6-DMP-20, C6-MDC-20, C6-PUC-20

Semester 4:

- C6-MDB-20, C6-DSA-20, C6-PUJ, C6-WDD-20, C6-WDP-20

Semester 5:

- C7-MA1-20, C7-MAN-20, C7-ITE-20, C7-SIA-20, C6-MOS-20, C7-HMD-20

Semester 6:

- C7-MAS-20, C7-MA2-20, C7-CCS-20, C7-RMS- 20, C6-SEN-20, Elective Select any one (C7-DIS-20, C7-MTH-20, C7-MIA - 20)

Semester 7:

- C7-MGD-20, C7-RP1-20, C7-MFO-20, B8-ENI -20 Elective Select any one (C8-ITL-20, C8-MEC-20, C8-MID-20)

Semester 8:

- C7-PPC-20, C8-RP2-20

Admissions Criteria

1) SGCSE/equivalent with minimum Credit (C) in 5 subjects including English and Mathematics.

2) Applicants in possession of a Diploma or Higher Diploma in related field may be given exemptions based on the credit point equivalency.

3) For enquiries and more information please visit our website: www.bothouniversity.com

Bachelors of Science in Network Security and Computer Forensics

Programme details:

The programme consists of core (required) and elective modules as detailed below. Some modules may have pre-requisites (i.e. may require the student to pass another module or set of modules first). Some modules may be co-requisite (i.e. such modules are required to be taken together). The number at the end of the module in parenthesis indicates the credit load of the module. 1 credit is equal to 10 hours of learning (guided, in-class and independent combined); therefore a 10-credit module requires on average 100 hours of learning from the student.

Core modules:

- C5-CE1-20: Computer and its Essentials 1 (10)
- C5-PLD-20: Programming Logic and Design (10)
- C5-MAT-20: Mathematics (10)
- C5-OSH-11: Operating System and Hardware (20)
- C6-PIE-20: Professional Issues and Ethics (10)
- C6-NEF-20: Networking Fundamentals (20)
- C6-DBC-20: Database Concepts (10)
- D6-AST-20: Academic Writing for STEM (10)
- C6-CE2-20: Computer and its Essentials 2 (10)
- C6-EOL-20: Essentials of Linux (10)
- C6-CFO-23: Computer Forensics (10)
- C6-PUC-20: Programming using C++ (20)
- C6-CFO-23: Computer Forensics Lab (10)
- C6-RSW-20: Routing and Switching (10)
- C6-RSL-20: Routing and Switching Lab (10)
- C7-SCS-23: Scripting for Cyber Security (20)
- C6-PCS-23: Principles of Cyber Security (10)
- C6-OSF-23: Operating System Forensics (10)
- C6-NSE-20: Network Security (10)
- C7-WMS-23: Wireless and Mobile Security (10)
- C7-IDS-23: Information and Data Security (10)
- C7-EHK-13: Ethical Hacking (20)

- C7-SDN-23: Software Defined Network Engineering (10)
- C7-FIT-23: Forensics Investigation Techniques (10)
- C7-CGT-23: Cryptographic Techniques (10)
- C7-RMS-20: Research Methods for STEM (10)
- C7-MAN-13: Malware Analysis (20)
- C7-AEH-23: Advanced Ethical Hacking (10)
- V-C7-MFO-23: Mobile Forensics (10)
- C8-CCI-23: Cyber Crime Investigation (10)
- C7-RP1-20: Research Project 1: Proposal Writing (10)
- C7-CYL-23: Cyber Law (10)
- B8-ENT-13: Essentials of Entrepreneurship (20)
- C8-RP2-20: Research Project 2: Dissertation (20)
- C7-PRC-20: Professional Practice in Computing (40)

Elective Modules:

- C7-IOT-23: Internet of Things (10)
- C7-CCS-20: Cloud Computing and Security (10)
- C7-SDE-20: Security by Design (10)
- C8-MAS-20: Media and Storage (10)
- C8-MEF-23: Media Forensics (10)
- C8-ISG-23: Information Security Management and Governance (10)

Recommended full-time study path (4 years):

Semester 1:

- C5-CE1-20, C5-PLD-20, C5-MAT-20, C5-OSH-11, C6-PIE-20

Semester 2:

- C6-NEF-20, C6-DBC-20, D6-AST-20, C6-CE2-20, C6-EOL-20

Semester 3:

- C6-CFO-23, C6-PUC-20, C6-CFO-23, C6-RSW-20, C6-RSL-20

Semester 4:

- C7-SCS-23, C6-PCS-23, C6-OSF-23, C6-NSE-20, C7-WMS-23

Semester 5:

- C7-IDS-23, C7-EHK-13, C7-SDN-23,

FACULTY OF ENGINEERING AND TECHNOLOGY (CONTINUED)

C7-FIT-23, C7-CGT-23

Semester 6:

•C7-RMS-20, C7-MAN-13, C7-AEH-23, C7-MFO-23, Elective Select any one (C7-IOT-23, C7-CCS-20, C7-SDE-20)

Semester 7:

•C8-CCI-23, C7-RP1-20, C7-CYL-23, B8-ENT, Elective Select any one (C8-MAS-20, C8-MEF-23, C8-ISO-23)

Semester 8:

•C8-RP2-20, C7-PRC-20

Admissions Criteria

1) SGCSE/equivalent with minimum Credit (C) in 5 subjects including English and Mathematics.

2) Applicants in possession of a Diploma or Higher Diploma in related field may be given exemptions based on the credit point equivalency.

3) For enquiries and more information please visit our website: **www.**

bothouniversity.com



GENERAL ADMISSIONS INFORMATION



GENERAL CRITERIA

1. Applying to Botho University

Before applying to Botho University, students are encouraged to take time out to familiarise themselves with all the programmes on offer. Applicants must meet all the relevant minimum requirements for the programme of study they wish to study. It is also important for applicants to assess whether the programme they choose interests them and that they want to make a career out of it. Our friendly Admission Team Counsellors will provide information needed about the programmes and assist applicants to make informed choices. Details on programmes are available on our website:

www.bothouniversity.com

2. How to calculate points

The admission point system is used to measure your academic achievement based on your school-leaving results. Your school-leaving subject grades or percentages are converted into points as per the table (see Table 1) and based on your qualification. These points are added up to arrive at the number of points you have obtained.

GENERAL ADMISSIONS INFORMATION (CONTINUED)

Table 1

POINTS	GCE			GCSE					SENIOR CERTIFICATE			IB	
	A-LEVEL/ HSC	AS	COSC	HIGCSE	IGCSE	BGCSE	LGCSE	SGCSE	NSC	HG	SG	HL	SL
12	A											7	
11	B											6	
10	C	a		1					7	A		5	7
9	D	b		2					6	B		4	6
8	E	c	A	3	A*,A	A*,A	A*,A	A*	5	C	A	3	5
7		d	B		B	B	B	A	4	D	B	2	4
6	0/S	e	C	4	C	C	C	B	3	E	C		3
5			D		D	D	D	C	2		D		2
4			E		E	E	E	D			E		
3								E					
0					F	F		F			F		
								G					

3. Important points to remember when applying:

- All students can apply in person or using the online application form available on the website. Please read the “Steps to Apply” document available on the application portal before applying.
- Clear certified copies of all relevant educational certificates.
- Clear certified copies of passport/identity card.
- Please read the Fee Structure and Policy document available on the website before applying.

Botho University offers quality support services and programmes that advance student access to learning, welfare, wellness and talent development through Student and Alumni Affairs Department (SAAD).



Services offered by the various units of the department include:

Career and Counselling Services

The unit is available to provide students with psycho-social support, career counselling and academic advising, to further students' personal and professional development.

Special Needs Support

The Special Needs Unit is responsible for managing the welfare of students with special learning needs. The services provided include but are not limited to:

- Special accommodation during exams
- Classroom support
- Resource Lab/Centre
- Individual Education Plan (IEP)

Internships and Placement

The Placement and Internship Unit deals with connecting students with appropriate internship opportunities and assisting graduates in seeking employment.

Alumni Relations

The Alumni Relations Unit aims to foster a lifelong relationship between the university and its graduates. Its intention is to build strong networks

with graduates, geared towards lifelong learning for alumni. Services rendered by this unit include:

- Career Development Support
- Lifelong learning
- Opportunity to mentor university students
- Alumni Community Impact Programmes
- Stay connected facility
- Career Fairs

Health and Wellness

The unit manages the health and wellness of students and staff. It manages the operations of the University clinic, HIV and AIDS policy, and medical emergency evacuations. Some of the services provided include:

- Assistance with minor illness
- Referrals to major clinics and hospitals
- Management of HIV and AIDS interventions and campaigns.
- Wellness programmes



EMPLOYABILITY AND OUR GRADUATES (CONTINUED)

Personal Development

This unit is mandated to teach students life skills. These skills will enable students to cope with tertiary life and life beyond the university. The Personal Development Unit manages and administrates the following:

- Personal Development
- First Year Experience
- Mentorship
- Development Workshops
- Motivation Sessions
- Entrepreneurship Development
- Leadership Programme

Community Engagement

Botho University is committed to the improvement of people's lives in various communities through skills development, entrepreneurship and community empowerment. This division encourages students to interact with communities in planning and implementing programmes and/or activities aimed at addressing the current demands and situations they are facing. The purpose of this partnership with communities is to improve the lives of people, empower communities to be self-reliant and to develop entrepreneurship skills. The division has an emphasis on instilling the values of volunteerism, Botho, spirit of giving and compassion.

Sports, Culture and Recreation

The unit seeks to contribute to academic performance and personal success by promoting welfare and wellness through talent enhancement and management. This unit has a variety of sporting and non-sporting clubs which seek to contribute to the development of each student in relation to the Botho Graduate Profile.



QUALITY & ACCOLADES



Registered Institution in the Kingdom of Eswatini

Approved by Eswatini Higher Education Council (ESHEC) Kingdom of Eswatini.



BQA Registered and Accredited Institution in Botswana

Registered and Accredited as an Education & Training provider by Botswana Qualifications Authority (BQA)



Registered Institution in the Kingdom of Lesotho

Registered with Ministry of Education and Training and approved by Council on Higher Education, Kingdom of Lesotho



Registered Institution in the Republic of Namibia

Registered with the National Council for Higher Education in Namibia



HRDC Registered Institution

Botho University is registered with the Human Resource Development Advisory Council (HRDC) of Botswana.



BOS ISO 9001:2015 Certified Organisation

We are the only University in Botswana to be BOS ISO 9001:2015 certified - a clear indicator of our passion and commitment to quality. The BOS ISO 9001:2015 certification is considered "hard to obtain and difficult to maintain" by some of its recipients.



PMR Africa Golden Arrow Award 2014, Diamond Arrow Award 2015 and 2017

Winner of the PMR Africa "Golden and Diamond Arrow Awards" for excellence under the tertiary institutions category in Botswana as rated by organisations across Botswana.



ACCA Gold Partner

Botho University has been awarded "Gold" status by the Association of Chartered Certified Accountants (ACCA), UK.



AAT Best International Training Provider of the Year 2014 & 2018

Botho University is the only institution in Botswana to be nominated and also to win this award.



Rated by African Quality Rating Mechanism (AQRM)

Botho University's quality at programme level is rated "Good Quality" by the African Quality Rating Mechanism (AQRM), an initiative of the Commission of the African Union (AUC) to establish an African quality assurance system for higher education institutions.



Enrol as an online student for a course at **Botho University**

**Blended and
Distance Learning**

PROGRAMMES

FACULTY OF BUSINESS AND ACCOUNTING

- » MBA
- » MCom in Human Resource Management
- » MCom Banking
- » BBA in Business Management
- » BCom in Risk Management
- » BCom in Accounting
- » BCom in Finance
- » BCom in Investment and Banking
- » BCom in Digital Marketing ***New**

FACULTY OF ENGINEERING AND TECHNOLOGY

- » MSc in Information Systems Management
- » BSc in Data Science ***New**
- » BSc (Honours) in Computing
- » BSc (Honours) in Network Security and Computer Forensics

FACULTY OF HEALTH AND EDUCATION

- » MEd in Curriculum Design and Instruction
- » MEd in Higher Education
- » MEd Educational Leadership and Management
- » BSc in Health Information Management
- » BEd (Hons) in Primary Education
- » Post Graduate Diploma in Higher Education
- » Post Graduate Diploma in Educational Technology
- » Diploma in Occupational Health and Safety

FACULTY OF HOSPITALITY AND SUSTAINABLE TOURISM

- » Diploma in Travel Operations
- » Diploma in Cultural Tourism



**6
intakes
in a year**



BDL CAMPUS

The above programmes are updated on the date of printing this document, for latest updates visit our website.

www.bothouniversity.com for more info

GET IN TOUCH

Tel: +267 363 5477

Email: DL@bothouniversity.ac.bw



VIBRANCE



INNOVATION



IMPACT



BOTHO CAMPUS



LESSOR CAMPUS



LESSOR CAMPUS



LESSOR CAMPUS



LESSOR CAMPUS



LESSOR CAMPUS



LESSOR CAMPUS



BOS ISO 9001:2015 CERTIFIED ORGANISATION
www.bothouniversity.com

NOTES

This image shows a single sheet of white paper with horizontal ruling lines. The lines are evenly spaced and run across the width of the page. There are no margins, text, or other markings on the paper.



BOTHO

• GRADUATE •
PROFILE

ENHANCING YOUR EMPLOYABILITY

The **Botho Graduate Profile (BGP)** is a list of qualities that all Botho University Students are encouraged to learn and imbibe before they graduate.



ARTICULATE

able to communicate information eloquently, effectively and appropriately to a given audience



COLLABORATIVE

considerate of and able to work and communicate effectively with teams of people from different social and cultural backgrounds



CRITICAL-THINKING

having the curiosity and open-mindedness to acquire new knowledge by analysing, reflecting on and evaluating information



DIGITALLY LITERATE

able to identify trustworthy information and use technology creatively and appropriately to solve problems, make decisions, and improve quality of life



ENVIRONMENTALLY RESPONSIBLE

committed to conserving resources and protecting the environment



INNOVATIVE & ENTREPRENEURIAL

able to identify opportunities and take measured risk to develop new and improved ideas, processes and products that create value



KNOWLEDGEABLE & HARDWORKING

understanding a field of study with the expertise, professionalism, motivation and commitment to apply the knowledge gained to solve problems and deliver quality work



POSITIVE & CONFIDENT

being friendly, optimistic, adaptable, and resilient, and able to display healthy self-esteem, especially when interacting with others and making decisions



SOCIALLY RESPONSIBLE

makes decisions and takes actions ethically, with integrity, and with the best interest of society as a whole

Scan for a PDF
copy



GABORONE CAMPUS: Botho Education Park, Kgale, Gaborone, Botswana | Tel: +267 363 5421 / 422 / 446

MASERU CAMPUS: West Wing, Thetsane, Maseru, Lesotho | Tel: +266 22247500

ONGWEDIVA CAMPUS: Mandume Ndemufayo street, Maroela mall Ongwediva, Namibia | Tel: +264 652 30227

ESWATINI CAMPUS: Plot No 1206, Riverstone Mall, Manzini, Eswatini | Tel: +268 2505 2288

GHANA CAMPUS: Jungle Ave. Rd., Near A&C Shopping Mall, East Legon-Accra, Ghana

BLENDED & DISTANCE LEARNING CAMPUS: DL@bothouniversity.ac.bw | online.bothouniversity.com | Tel: +267 363 5477



BOTSWANA CAMPUS LESOTHO CAMPUS ESWATINI CAMPUS NAMIBIA CAMPUS GHANA CAMPUS BGL CAMPUS



BOS ISO 9001:2015 CERTIFIED ORGANISATION
www.bothouniversity.com



BOTHO
UNIVERSITY
VIBRANCE • INNOVATION • IMPACT