



ESWATINI
CAMPUS

BOTHO
UNIVERSITY
VIBRANCE • INNOVATION • IMPACT



BOTHO UNIVERSITY

PROSPECTUS 2026

APPLY NOW

SCAN ME



www.bothouniversity.com



Botho in Action.
Botho in Values.
Botho in Practice.

GRADUATE INSIGHTS, REAL-WORLD IMPACT

By listening to our graduates, Botho University continually refines its programmes to ensure our alumni remain highly employable and industry-ready.

98%

of our graduates would **recommend Botho University** to others.

91%

of our graduates will **recommend their programme of study** completed at Botho University to others

87%

of our graduates are **satisfied with their Botho University education** in achieving their goals after completion.

85%

of our graduates are **satisfied with the overall quality of instruction** at Botho University

86%

of our graduates **stated that they developed practical skills** as a result of their programme of study at BU

83%

of our graduates **stated that the programme meets industry expectations**

**2025 Botho University Graduate Tracer Study
(Based on the number of respondents)*

BOTHO
UNIVERSITY
VIBRANCE • INNOVATION • IMPACT

The Botho Graduate Profile (BGP)

is a list of qualities that all Botho University students are encouraged to learn and imbibe before they graduate.



ARTICULATE

Able to communicate information eloquently, effectively and appropriately to a given audience.



COLLABORATIVE

Considerate of and able to work and communicate effectively with teams of people from different social and cultural backgrounds.



CRITICAL THINKING

Having the curiosity and open mindedness to acquire new knowledge by analyzing, reflecting on and evaluating information.



DIGITALLY LITERATE

Able to identify trustworthy information and use technology creatively and appropriately to solve problems, make decisions, and improve quality of life.



ENVIRONMENTALLY RESPONSIBLE

Committed to conserving resources and protecting the environment.



INNOVATIVE & ENTREPRENEURIAL

Able to identify opportunities and take measured risk to develop new and improved ideas, processes and products that create value.



KNOWLEDGEABLE & HARDWORKING

Understanding a field of study with the expertise, professionalism, motivation and commitment to apply the knowledge gained to solve problems and deliver quality work.



POSITIVE & CONFIDENT

Being friendly, optimistic, adaptable and resilient, and able to display healthy self-esteem, especially when interacting with others and making decisions.



SOCIALLY RESPONSIBLE

Makes decisions and takes actions ethically, with integrity, and in the best interest of society as a whole.

BGP Skills listed above are based on inputs from industry, academia, research, our context and global best practice and employability reports.

TABLE OF CONTENTS

About Us	5
.....	
Our Industry Aligned Programmes	6
.....	
• Faculty of Business And Accounting	7-8
• Faculty of Engineering And Technology	9-10
• Faculty of Health And Education	11-12
General Admissions Information	
.....	13

“

Botho is an Ethos, a powerful and revered concept. Similar to **Ubuntu**.
"Botho" is upheld as part of Botswana's 5 National Principles - Our name defines us.

The Spirit of Botho - I am because you are. The possession of good qualities associated with a good human being.

”

ABOUT US



CREATING IMPACT ACROSS
12 OUT OF 17
SDG's



Botho University (BU) was founded in 1997 and has quickly grown into a prominent multi-disciplinary institution offering quality higher education across three countries across Sub-Saharan Africa: Lesotho, Botswana and Eswatini, alongside an Online Learning Campus.

Botho University offers qualifications ranging from Undergraduate, Postgraduate and Doctoral programmes in the near future. With over 7,000+ students and nearly 400 staff members, the university is a hub of learning and innovation. In Eswatini, it operates under three faculties:

- Faculty of Business & Accounting,
- Faculty of Engineering and Technology,
- Faculty of Health and Education.

All of Botho University's programmes are accredited by the relevant regulatory bodies in each country where it operates. In Eswatini, **we are the only institution to have all our academic offerings fully accredited by the Eswatini Higher Education Council (ESHEC).**

The university's 2023-2027 strategy emphasizes the principles of Vibrance, Innovation, and Impact, ensuring that Botho University remains a dynamic and exciting place for students and staff alike. Guided by its core values of integrity, excellence, and inclusiveness, Botho University nurtures well-rounded, entrepreneurial graduates who are globally employable. These graduates possess the attitude, knowledge, skills, and competencies required to drive productivity and foster sustainable economic growth.

Committed to maintaining exceptionally high standards, Botho University is ISO 9001:2015 certified, demonstrating its adherence to international quality assurance standards.

OUR PROGRAMMES

All our programmes are approved and accredited by
Eswatini Higher Education Council (ESHEC).

FACULTY OF BUSINESS & ACCOUNTING

Bachelor of Commerce in Accounting

Bachelor of Business Administration in Business Management

FACULTY OF ENGINEERING AND TECHNOLOGY

Bachelor of Science in Computing

Bachelor of Science in Network Security and Computer Forensics

FACULTY OF HEALTH AND EDUCATION

Bachelor of Science in Health Information Management

*Check our website for the latest updates on Campus Learning programmes and Distance Learning programmes by visiting www.bothouniversity.com

**ALL PROGRAMMES ARE APPROVED FOR
GOVERNMENT SCHOLARSHIP UNDER
MLSS (MINISTRY OF LABOUR AND SOCIAL SECURITY)**

Bachelor of Commerce in Accounting

Programme Overview:

Your future in accounting starts here. The Bachelor of Commerce in Accounting offers a practical, industry-focused pathway to a rewarding career in accounting and finance. You will build expertise in financial reporting, auditing, taxation, and management accounting. What makes this degree distinctive is its strong balance of theory and practice, including a compulsory semester-long internship that provides invaluable real-world experience.

Graduates are prepared for a wide range of careers in public and private accounting, financial analysis, banking, and government. The programme also lays a solid foundation for professional certifications such as ACCA, CPA, and CIMA, opening doors to advanced career opportunities and ensuring you are ready to excel in today's financial world.

Admissions Criteria

1) EGCSE/equivalent with 5 Credits including English and Mathematics.

2) Applicants in possession of a Diploma or Higher Diploma in related field may be given exemptions based on the credit point equivalency.

3) For enquiries and more information please visit our website: www.bothouniversity.com

Graduates of this programme can:

- Keep record of company income, expenditure, assets and liabilities
- Handle money, cheques and other payments
- Manage assets
- Ensure all legal requirements are met
- Manage businesses

- Compile budget
- Control expenses
- Manage purchases and sales
- Handle Tax matters
- Auditing or assist in auditing
- Prepare financial statements
- Prepare management accounts
- Management investment portfolios

Career Prospects:

- Accountant
- Accounts clerk
- Administrator
- Financial consultant
- Financial planner
- Financial secretary
- Company secretary
- Compliance officer
- Economist
- Asset manager
- Auditor
- Banker
- Bookkeeper
- Business manager
- Foreign exchange officer
- Insurance consultant
- Internal auditor
- Tax consultant
- Teacher/Lecturer
- Teller
- Property valuer
- Financial manager
- Supply chain manager
- Office administrator
- Property manager
- Investment manager
- Management accountant

Skills Developed:

- Computer skills
- Attention to detail
- Interest in banking systems
- Research
- Analytical
- Critical thinking
- Entrepreneurial
- Problem-solving

Bachelor of Business Administration in Business Management

Programme Overview:

Aiming for a leadership role in the global business world? The Bachelor of Business Administration in Business Management provides the strategic mindset and practical skills you need. The programme covers management, finance, marketing, entrepreneurship, operations, and digital transformation, with a strong emphasis on innovation, sustainability, and ethical leadership.

Through case studies, collaborative projects, and industry-driven learning, you will gain real-world experience while sharpening critical thinking and problem-solving abilities. Whether your ambition is to launch an entrepreneurial venture or advance in a corporate career, this degree equips you to drive innovation and achieve lasting success.

Admissions Criteria

1) EGCSE/equivalent with 5 Credits including English and Mathematics.

2) Applicants in possession of a Diploma or Higher Diploma in related field may be given exemptions based on the credit point equivalency.

3) For enquiries and more information please visit our website: www.bothouniversity.com

Graduates of this programme can:

- Address practical business problems
- Make key business decisions
- Influence business strategy
- Analyse business data
- Manage and organise product portfolio
- Appraise corporate projects
- Manage small business
- Plan and implement strategic plan
- Establish new ventures
- Research and development

Career Prospects:

- Country Manager
- Branch Manager
- Branch Supervisor
- Business Lecturer
- Business Consultant
- Change Management Consultant
- Business Process Orchestration Analyst
- Operations Manager

Skills Developed:

- Understanding of facts and figures
- Computer skills
- Presentation skills
- Market intelligence
- Ability to deal with people
- Interest in starting and growing a business



Bachelor of Science in Computing

Programme Overview:

The Bachelor of Science in Computing provides students with a comprehensive foundation in core computing principles, technologies, and methodologies. The programme emphasises problem-solving, software development, systems analysis, and system design, equipping graduates with the skills needed to develop innovative computing solutions across a wide range of industries and to adapt effectively to the rapidly evolving technological landscape.

The programme offers two specialised tracks that allow students to tailor their studies according to their career interests. The Software Engineering track is designed for students aspiring to careers in areas such as software engineering, artificial intelligence, and data science. This track focuses on programming, software design and development, data-driven applications, and emerging intelligent technologies.

The Networking specialisation track is aimed at students interested in careers in hardware and network engineering. It focuses on the design, implementation, management, and troubleshooting of local and wide area network (LAN and WAN) infrastructures, with practical exposure to industry-standard tools and technologies, including Cisco and Huawei networking platforms and applications.

By combining a strong computing foundation with focused specialisation, the BSc in Computing prepares graduates for diverse professional roles in the computing and information technology sector, as well as for further studies and professional certification.

Admissions Criteria

- 1) EGCSE/equivalent with 5 Credits including English and Mathematics.
- 2) Applicants in possession of a Diploma or Higher Diploma in related field may be given exemptions based on the credit point equivalency.
- 3) For enquiries and more information please visit our website: www.bothouniversity.com

Graduates of this programme can:

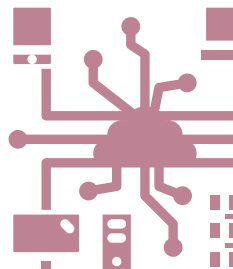
- Plan IT systems for businesses
- Develop and maintain computer systems
- Install computer networks
- Provide technical support
- Write manuals about the equipment they make
- Design new technologies
- Administer databases
- Find ways of making businesses more efficient using technology
- Undertake programming

Career Prospects:

- Software Engineer
- Network Engineer
- Network Administrator
- Database Designer
- Database Administrator
- Web Designer
- Teachers/Lecturer
- System Administrator
- IT Manager

Skills Developed:

- Programming Languages
- Software Development
- Database Management
- Web Development
- Networking
- Operating Systems
- Cybersecurity
- Data Analysis
- Cloud Computing
- Mobile Development
- Project Management



Bachelor of Science in Network Security and Computer Forensics

Programme Overview:

Interested in safeguarding digital systems and uncovering cybercrime? Our BSc in Network Security and Computer Forensics is a specialised degree designed to prepare students to protect information assets and investigate cyber incidents. The programme offers practical training in penetration testing, digital forensics, and network defence, combining fundamental computing with advanced security practices.

Students will engage with key topics such as ethical hacking, cybercrime investigation, and malware analysis, while also developing a strong grounding in ethical and legal considerations. Graduates emerge ready for careers as network security specialists or digital forensic investigators in government, corporations, and law enforcement, addressing critical challenges in today's digital world.

Admissions Criteria

- 1) EGCSE/equivalent with 5 Credits including English and Mathematics.
- 2) Applicants in possession of a Diploma or Higher Diploma in related field may be given exemptions based on the credit point equivalency.
- 3) For enquiries and more information please visit our website: www.bothouniversity.com

Graduates of this programme can:

- Design and develop network architecture and ensure security of the network
- Acquire knowledge of computer crime through forensic methods.
- Process legal requirements for collecting evidence.

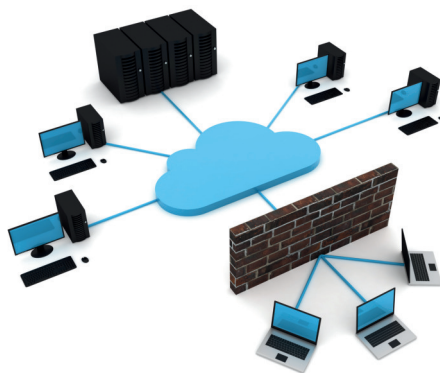
Career Prospects:

- Information Technology
- Computer Forensics Analysts

- Vulnerability Security Research Engineer
- Digital Forensics Examiner
- Malware Media Forensics Analysts
- Forensics Auditors
- Network Security Specialists
- Computer Crime Investigators / Security Analysts

Skills Developed:

- Networking Protocols
- Network Architecture and Design
- Routing and Switching
- Network Security
- Wireless Networking
- Network Management and Monitoring
- Network Virtualisation
- Cloud Computing and Networking
- Network Troubleshooting
- Cryptography
- Operating Systems
- Programming and Scripting
- Project Management



Bachelor of Science in Health Information Management

Programme Overview:

Fascinated by the intersection of healthcare and technology? The BSc in Health Information Management equips learners to manage health data, information systems, and technology solutions. This interdisciplinary programme combines health sciences, IT, and management principles, preparing graduates for careers in healthcare data management and analytics.

Students develop expertise in maintaining data integrity, privacy, and compliance with healthcare regulations, alongside analytical, technical, and managerial skills. Graduates are well-prepared for roles such as Health Information Managers or Clinical Data Analysts, making a meaningful contribution to the future of healthcare information management.

Admissions Criteria

1) EGCSE/equivalent with 5 Credits including English and Biology/Double Sciences.

2) Applicants in possession of a Diploma or Higher Diploma in related field may be given exemptions based on the credit point equivalency.

3) For enquiries and more information please visit our website: www.bothouniversity.com

Graduates of this programme can:

- Build effective systems to collect, generate, organise, collate, analyse, interpret and disseminate health related data
- Organise and present health related information for policy, planning and for operations management of the health sector
- Design data collection tools/instruments
- Conduct special studies/evaluations on health information areas
- Develop protocols/guidelines for health information management
- Develop and manage a health informatics infrastructure
- Develop and administer medical databases
- Ensure privacy and ethical practices when managing patient data
- Carry out medical transcription
- Carry out coding of diseases and drugs using ICD 10 or later standards



Bachelor of Science in Health Information Management (Contd..)

Career Prospects:

- Health Data & Information Management Officer/Managers
- Medical Informatician
- Data Quality Manager & Researcher
- Public Health Information Managers/ Officers
- Inpatient and Outpatient HIM Coder & Coding Educator
- Director – Coding Operations Hospital
- HIM Analyst/Coder
- HIM Programme Director
- Medical Coding Manager
- HIM Consultant
- HIM Practice Leader Operations
- Health Information Services Manager
- Insurance Manager
- Hospital Administrator

Skills Developed:

- Computer skills
- Professional writing
- Presentation skills
- Data collection and analysis skills
- Problem-solving skills
- Creative, critical, logical and analytical thinking skills
- Team building and management skills



GENERAL ADMISSIONS INFORMATION

POINTS	UK IGCSE / UK COSC / BOTSWANA BGCSE / X / ESWATINI SGCSE / NAMIBIA NSSC ORDINARY / NAMIBIA NSSC O-LEVEL / SOUTH AFRICA SENIOR CERTIFICATE SG	UK GCSE / GCE O-Level	SOUTH AFRICA NSC	WEST AFRICA WASSCE / SSSCE / LIBERIA LSHSCE / ZAMBIA ZSCE	USA GED	UK GCE AS- Level / Namibia NSSC AS-Level / South Africa Senior Certificate HG	IBDP STANDARD - LEVEL	UK HIGCSE / NAMIBIA NSSC HIGHER	UK GCE A- Level	IBDP HIGHER - LEVEL	POINTS
10									A	7	10
9						A,a	7	1	B	6	9
8	A*	A*,9,8	A*		195 - 200	B,b	6	2	C	5	8
7	A	A,7	A, 7	A1, 1	185 - 194	C,c	5	3	D	4	7
6	B	B, 6, 5	B, 6	B2, B3, 2, 3	175 - 184	D,d	4	4	E	3	6
5	C	C, 4	C, 5	C4, C5, C6, 4, 5, 6	165 - 174	E,e	3			2	5
4	D	D, 3	D, 4	D7, 7	155 - 164		2		N, O, SUB	1	4
3	E	E, 2	E, 3	E8, 8	145 - 154						3
2											2
1											1
0	F, G, U	F, G, U, 1	F, G, U, 2, 1	F9, 9	0 - 144	F, f	1	U			0

1. Applying to Botho University

Before applying to Botho University, students are encouraged to take time out to familiarise themselves with all the programmes on offer. Applicants must meet all the relevant minimum requirements for the programme of study they wish to study. It is also important for applicants to assess whether the programme they choose interests them and that they want to make a career out of it. Our friendly Admission Team Counsellors will provide information needed about the programmes and assist applicants to make informed choices. Details on programmes are available on our website: www.bothouniversity.com

2. How to calculate points

The admission point system is used to measure your academic achievement based on your school-leaving results. Your school-leaving subject grades or percentages are converted into points as per the table above and based on your qualification. These points are added up to arrive at the number of points you have obtained.

3. Important points to remember when applying:

All students can apply in person or using the application form available on the website. Please read the Fee Structure and Policy document available on the website before applying.

Important documents required:

- Clear certified copies of all relevant educational certificates.
- Clear certified copies of passport/identity card.

Some programmes may require additional documentation to complete the application process; please refer to the application form.

Should you have any doubts regarding the application process, please contact our admissions department for further assistance.

SCAN THIS QR
CODE TO
APPLY:



Discover *Online Learning* at **Botho University**

Globally Recognized *proudly African*

BOTHO
UNIVERSITY

VIBRANCE • INNOVATION • IMPACT

ONLINE 

DOCTORAL PROGRAMMES

- Doctor of Philosophy (PhD) in Computer Science
- Doctor of Philosophy (PhD) in Business Administration

POSTGRADUATE PROGRAMMES

- Master of Business Administration
- MCom in Human Resource Management
- MEd in Curriculum Design and Instruction
- PGDHE (Post Graduate Diploma in Higher Education)
- MEd in Educational Leadership and Management
- MSc in Computer Science
- MSc in Information Systems Management
- MEd in Higher Education

UNDERGRADUATE PROGRAMMES

- BBA in Business Management
- BCom in Accounting
- BEd in Primary Education
- BSc in Data Science
- BSc in Health Information Management
- BSc in Hospital Administration
- BSc in Network Security and Computer Forensics
- BSc in Safety, Health and Environmental Management
- Diploma in Occupational Health Safety



APPLY NOW

online.bothouniversity.com



**SCAN to
GET A
CALL BACK**

*Botho in Action.
Botho in Values.
Botho in Practice.*

Why *Employers* Hire BOTHO Graduates ?



Mandatory Internships

Built into all curriculum which are **credit bearing** and closely monitored and assessed



Industry input into Curriculum through our Industry Reference Forums



Employer Feedback Mechanisms

Well established Employer feedback vouching for our students ability to learn on the job



Dual study **work integrated learning** approach - study half the semester, work the other half



Continuous Guest lectures **by industry experts** as part of curriculum



Projects and Practicals **form a significant part** of teaching and learning



ESWATINI
CAMPUS

BOTHO
UNIVERSITY
VIBRANCE • INNOVATION • IMPACT

Admissions Open for July 2026 Intake

FACULTY OF BUSINESS & ACCOUNTING

- » Bachelor of Commerce in Accounting
- » Bachelor of Business Administration in Business Management

FACULTY OF ENGINEERING AND TECHNOLOGY

- » Bachelor of Science in Computing
- » Bachelor of Science in Network Security and Computer Forensics.

FACULTY OF HEALTH AND EDUCATION

- » Bachelor of Science in Health Information Management

**ALL PROGRAMMES ARE
APPROVED FOR
GOVERNMENT
SCHOLARSHIP UNDER**

**MLSS (MINISTRY OF LABOUR
AND SOCIAL SECURITY)**

APPLY NOW!

 **+268 792 48837**

www.bothouniversity.com



100%
ACCREDITED BY
ESHEC

(Eswatini Higher
Education
Council)

*Botho in Action.
Botho in Values.
Botho in Practice.*

